

**Most companies rely on dozens, even 100s of suppliers**

Global Point Technology Group (GPTG) helps consolidate that into fewer, more capable partners spanning motion, controls, interfaces, displays, and integrated solutions.

- Fewer POs
- Less coordination
- Faster execution
- Lower total cost

**Why This Matters to You**

- Reduce vendor count: fewer POs, fewer problems
- Improve compatibility across systems
- Benchmark a current supplier: send us one part

**Global Point Technology Group** is an American family of seven specialized industrial brands; motors, controls, interfaces, displays, gear systems, mechatronics, and global sourcing. In business since 1989. 300+ employees. Five U.S. manufacturing locations plus facilities in China.

**THE GPTG FAMILY OF COMPANIES**



**American Control Electronics**

Custom Motor Control Systems · South Beloit, IL

**Simplifies motion control sourcing — drives, controls, and enclosures from one source.**

- Servo and Stepper controls; RS485, RS232, USB, CAN BUS options
- Wall voltage DC controls (115/230VAC, up to 25A); SCR & PWM; NEMA enclosures
- Low-voltage and actuator controls for linear positioning and cycling applications



[www.amcntrl.com](http://www.amcntrl.com)



**Klauber Machine & Gear**

Precision Fractional HP Gear Motors · Pacific, MO

**Delivers application-specific motion — custom gear reducers built to your OEM spec.**

- AC & DC parallel shaft and right-angle gearmotors; custom gear reducers to OEM specs
- CNC machining with Lean Six Sigma processes; FEA and CAD/CAM design capability
- Fully integrated manufacturing: precision gears, DC motors, universal motors under one roof



[www.klaubergear.com](http://www.klaubergear.com)



**GOT Interface**

Custom Interface Devices & Embedded Displays · Peabody, MA

**Cuts development time — integrated interface, display, and firmware as one deliverable.**

- Keypads: overlays, membrane switches, capacitive touch, silicon, flexible PCBAs
- Embedded displays (2.8"–7") with custom GUI; RS232/RS485/Modbus; 5.5–24V input
- Full design stack; mechanical, electrical, firmware, optical design, IoT/BLE/WiFi



[www.gotinterface.com](http://www.gotinterface.com)



**Tru-Vu Monitors**

Customizable Industrial Monitors · Fort Wayne, IN



**Custom built monitors and OEM displays - designed for demanding applications.**

- Built for 24/7/365 operation in demanding environments (sunlight, moisture, vibration, medical)
- Extensive configuration options: touchscreen, optical bonding, zero-bezel, panel mount & more
- Long-term availability, low-MOQ customization, and U.S.-based support

[www.tru-vumonitors.com](http://www.tru-vumonitors.com)



**Global Point Sourcing Solutions**

Global Manufacturing & Supply Chain · U.S. · China · Taiwan · Vietnam · and more

**Reduces cost and stabilizes supply — send us one item you're buying today.**

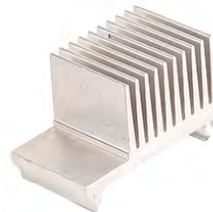
- 40+ years sourcing castings, extrusions, molding, PCBAs, cable harness, motors, and more
- Affiliated factory network across 8 countries; on-site quality engineers at every facility
- U.S. warehousing: Fort Wayne IN · Farmington NY · Los Angeles CA · Memphis TN



Die Casting



PCBs & Harnesses



Extrusions



Injection Molding



Machining

[www.globalpointusa.com](http://www.globalpointusa.com)

**If You're Already Buying From One Of Us... You're Likely Sourcing These Elsewhere**

<b>Small Touch Interfaces</b>	<ul style="list-style-type: none"> <li>• Integrated keypads, embedded GUI, or enclosures</li> </ul>
<b>Motor Controls &amp; Drives</b>	<ul style="list-style-type: none"> <li>• Matched gear systems and stepper/servo controllers</li> </ul>
<b>Individual Components</b>	<ul style="list-style-type: none"> <li>• Full assemblies, kitting, or global sourcing for your BOM</li> </ul>
<b>OEM System Integration</b>	<ul style="list-style-type: none"> <li>• Single-partner coordination across display, control, and mechanical</li> </ul>
<b>Industrial Displays &amp; Monitors</b>	<ul style="list-style-type: none"> <li>• Sunlight-readable, optically bonded, touchscreen and panel-mount monitor solutions</li> </ul>

**Having Issues for a Part, Component, or Assembly You're Currently Sourcing?**

Send us one part, assembly or drawing. We'll show you:

- If we can consolidate vendors
- If we can improve lead time
- If we can improve quality
- If we can improve your costs

**Your Point of Contact**

**Timothy J. Vetta**

V.P. of Sales & Marketing

[tvetta@gptg.com](mailto:tvetta@gptg.com)

815-355-1293

*I'll connect you directly to the right team within the GPTG family.*