

## SRMTP-21.5G-36A

### 21.5" Sunlight Readable Touch Screen Monitor

- Produces Clear, Sharp Images Even in Bright Sunlight
- 1,000 nits Brightness
- Projected Capacitive Touch Screen
- Zero-Bezel, All Glass Front (Anti-Glare)
- Full HD Resolution: 1920 x 1080
- HDMI, DisplayPort, and DVI Video Inputs
- Internal Speakers
- Auto Re-Start After Power Loss
- Lockable On-Screen Display Controls
- Compatible with Automation Direct HMI
- 9-36 VDC Power
- 3-Year Warranty
- TAA Compliant



## HIGH BRIGHTNESS P-CAP TOUCH SCREEN DISPLAYS

The SRMTP-21.5G-36A are 21.5" sunlight readable touch screen high brightness monitors. They feature at least 1000 nits brightness and a **16:9 aspect ratio**. We design the SRMTP-21.5G-36A sunlight bezel less touchscreens for use in direct sunlight with full HD resolution. Consequently, they are also perfect for other high ambient-light conditions. They utilize state-of-the-art LED backlights. The models in this series produce at least 1,000 nits brightness. In contrast, this is over 3 to 5 times brighter than standard monitors. For example, standard monitors have only 200-300 nits brightness. Therefore, the result is an amazingly bright screen. This bezel less touchscreen will provide you with crystal-clear images, even with bright, direct sunlight on the face of the screen. It is also compatible with Automation Direct HMI.

## RUGGED INDUSTRIAL TOUCH SCREEN MONITORS

The SRMTP-21.5G-36A 21.5" Sunlight Readable touch screen monitors are extremely rugged. For instance, we build them with true industrial-grade components. Furthermore, they receive our exclusive TRU-Tuff treatment. The TRU-Tuff process includes RTV silicone on all connections and critical components. Additionally, all wires are dressed, tie-wrapped and secured. Lastly, we apply ThreadLock to all screws. The rugged aluminum enclosure will ensure maximum shock and vibration resistance for this rugged 1000 nits brightness monitor.

## SUNLIGHT BEZEL LESS TOUCHSCREENS

We design the SRMTP-21.5G-36A sunlight readable touch displays to operate in nearly any environmental conditions. Whether in frigid conditions or blazing heat, these sunlight displays will survive and thrive. To clarify, these monitors will operate in temperatures down to -4°F (-20°C). They will also withstand brutal heat, with operating temperatures up to 176°F (80°C). The Aluminum or rugged bezel-less front and Aluminum rear enclosure assures these 21.5" high brightness touch screens will provide years of reliable imaging performance. Specifically, typical MTBF for these monitors is 50,000 hours.

## TRU-VU TOUCH SCREENS DEPLOYED WORLDWIDE

Our 21.5" sunlight readable touch screen monitors have been deployed in a wide range of demanding industries. For example, **military**, **law enforcement**, **industrial manufacturing**, **aviation** and **entertainment** benefit. They are also found in **inspection**, **kiosks**, **heavy equipment**, and **transportation**. TRU-Vu monitors are backed by our full 3-Year Warranty. This

ensures you of many years of reliable service.

We specialize in providing **Sunlight Readable** monitors and touch-screens for challenging environments. However demanding your application may be, we will provide the very best solution. Our vast client base shows our versatility in providing the very best Sunlight Readable Monitors in the industry. **What is a sunlight readable monitor?** To learn even more- watch this video.

#### OUR TECHNICAL EXPERTS ARE READY TO HELP YOU FIND THE BEST HIGH BRIGHT TOUCH DISPLAY

With over 200 LCD monitors and touch screens on our site, selecting frameless monitor or touch screen solution may be a bit overwhelming. To help narrow-down the choices, check out our **Advanced Search Tool**. For example, this enables you to filter by features important to you.

Shop by size **21" – 65" Monitors**, see our full line of **Touch Screen Monitors**, filter by **bezel less monitors**, or see all monitors that can operate on **24VDC** for similar models. We offer a full range of **open frame monitors** and **LCD modules** to accommodate space restrictions nearly any OEM may have. TRU-Vu can provide modified or **Custom OEM LCD Displays**. **Private Label Monitors** are also an option if you have very specific requirements. Visit our wide range of **LCD monitor mounts** and **stands** to complete your installation. We also offer our **21.5" monitors/ touch screens** as **Medical Grade Display** solutions.

Finally, our team members are ready to help! We can determine the exact solution that will meet your specific needs. Certainly, TRU-Vu will help provide crystal-clear images for your operating requirements. Call **(847) 259-2344** today to speak with one of our specialists. Above all, we will listen. It's one of the things we do best. Our professional advisors will ensure the monitor or touch screen you receive will be and do everything you had hoped it would!

If you prefer, fill out a **quick form** with your requirements, and we will guide you to the proper models that will work best.

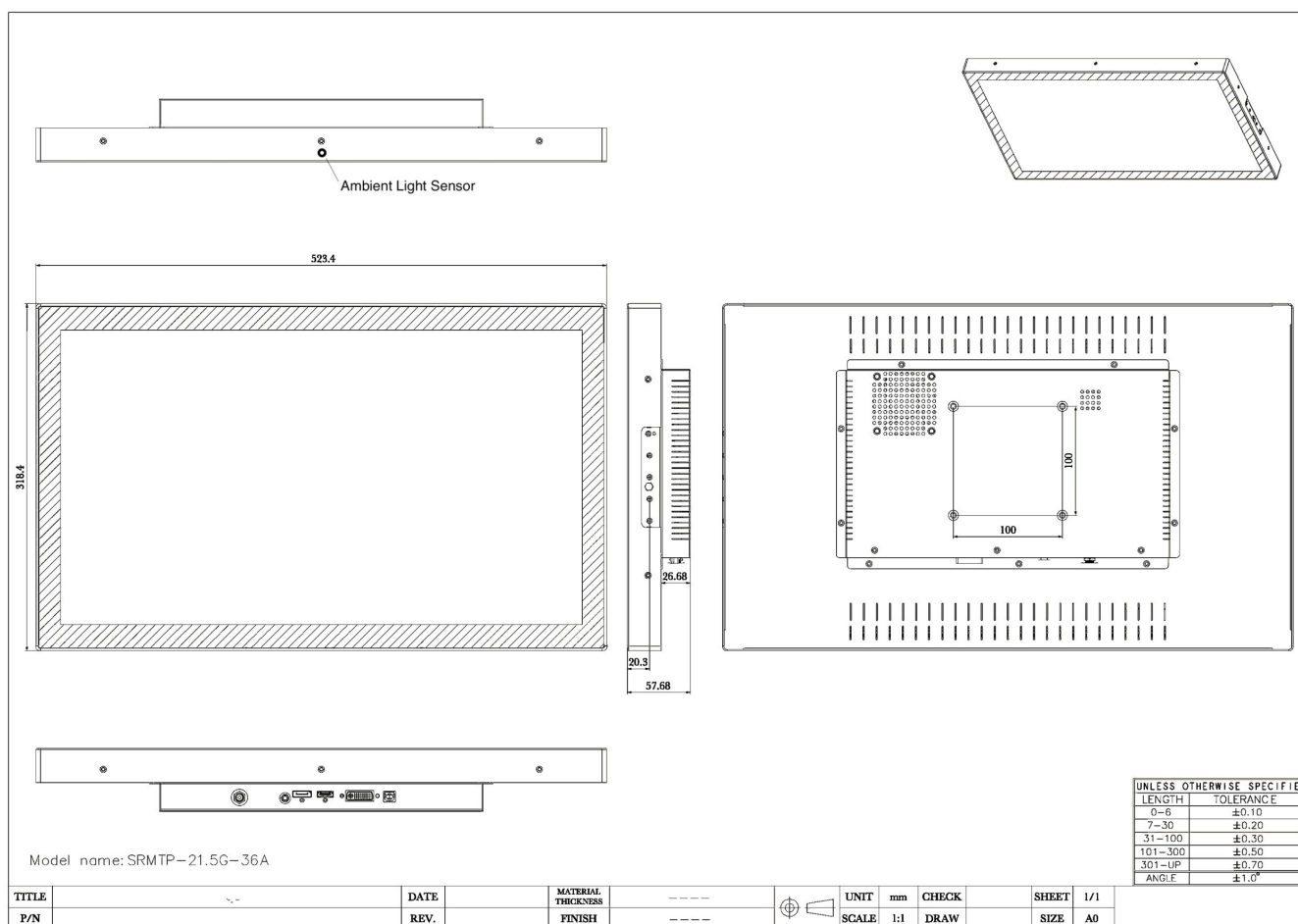
#### SPECIFICATIONS

	<b>SRMTP-21.5G-36A</b>
LCD Panel	21.5" Color TFT LCD (LED Backlights)
Touch Screen Type	Projected Capacitive
Front Glass	Anti-Glare All Glass Front
Touch Interface	USB
Resolution	1920 x 1080 (Full HD)
Viewable Area	18.76" (W) x 10.55" (H) (476.6 x 268.1mm)
Pixel Pitch	0.248mm
Display Colors	16.7 Million
Aspect Ratio	16:9 Widescreen
Glass	Anti-Glare
Brightness	1,000 nits
Contrast Ratio	5000:1
Viewing Angle	178° (H) x 178° (V)
Response Time	18 msec
Control	Via OSD (On-Screen Display) Side Push Buttons
Video Inputs	DVI, HDMI, DisplayPort
Audio	Rear Speakers
Power Requirement	9-36VDC (Optional External AC Power Supply Available)
Power Consumption	45W
Enclosure	Zero Bezel Front, Aluminum Rear

	<b>SRMTP-21.5G-36A</b>
Enclosure IP Rating	Front: IP65 Rear: IP30
Mounting	100 x 100mm Rear VESA Mount Holes (M4 x 6mm Screws)
Operating Temperature	-4° to 176°F (-20° to 80°C)
Humidity	5-90% RH
Shock	50 G Half-sine
Vibration	1.5 G RMS 10-200 Hz
Dimensions	20.61" (W) x 12.54" (H) x 2.28" D ( 523.4 x 318.4 x 57.9 mm)
Weight	8.14 lbs / 3.69 kg
Warranty	3-Years

Note: Specifications subject to change without notice.

## DIMENSIONS (MM)



SRMTP-21.5G-36A

## Standard Accessories:

- USB Cable
- HDMI Cable

- Audio Cable
- 2.5mm Locking Power Pigtail

**Available Options:**

- 90-240 VAC External AC Power Supply (PS-12-80W)
- Private Label
- Wall Mount Bracket or Tabletop Base
- Other Customer- Specific Modifications