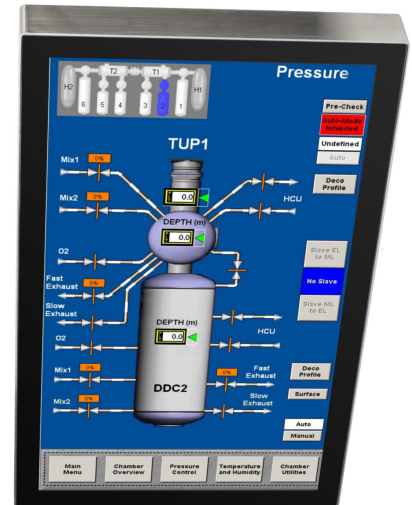


SRMHWTP-32R-P

32" Sunlight Readable Water Resistant Multi-Touch Touch Screen Monitor

- 1,500 nits Brightness
- Produces Clear, Sharp Images Even in Direct Bright Sunlight
- Projected Capacitive Touch Technology (Multi-Touch; 10 Points)
- Zero-Bezel, Stainless Steel Water Resistant Enclosure
- Ambient Light Sensor
- Portrait Mode
- Lockable On-Screen Display (OSD) Controls
- Auto Re-Start After Power Loss
- TRU-Tuff Treatment
- 3-Year Warranty
- TAA Compliant



32 WEATHERPROOF TOUCH SCREEN - SUNLIGHT READABLE DISPLAY FOR OUTDOOR USE

The SRMHWTP-32R-P are 32" sunlight readable water resistant touch screen monitors. They feature at least 1,500 nits screen brightness. This model has a 16:9 aspect ratio. We design this 32 weatherproof touch screen for outdoor use. It is an outdoor touch screen specifically for use in direct sunlight. Because of the high brightness of the SRMHWTP-32R-P monitors, they are also perfect for other high ambient-light conditions. These weather proof touch screens utilize state-of-the-art LED backlights. 1500 nits brightness is over 3 to 5 times brighter than standard monitors. For example, standard monitors are only 200-300 nits brightness. Therefore, the result is an amazingly bright screen. This will provide you with crystal-clear images, even in direct, bright sunlight on the face of the screen. These are full HD resolution with portrait orientation.

RUGGED WEATHER RESISTANT TOUCH SCREEN MONITOR

These 32" 1,500 nit touch screen lcd displays are not only bright, but extremely rugged. For example, they are built with true industrial-grade components. Furthermore, they receive our exclusive TRU-Tuff treatment. The TRU-Tuff process includes RTV silicone on all connections and critical components. Additionally, we dress all wires, tie-wrap and secure them. Lastly, we apply ThreadLock to all screws. The rugged Stainless Steel enclosure ensures maximum shock and vibration resistance for this rugged 1000 nit monitor. The enclosure face has a rating of NEMA 4X Waterproof. Projected capacitive touch technology can be activated via an exposed finger, and also when using thin latex or cotton gloves. The multi-touch capability allows up to 10 simultaneous finger operation for selecting, zoom, flick, and other functions. It is also unaffected by dirt, grease or moisture on the glass surface.

WATER RESISTANT OUTDOOR TOUCH SCREEN

This weatherproof touch screen monitor features a rugged waterproof stainless steel enclosure. (two vent holes on bottom) with a Zero-Bezel front face. It is rated NEMA 4X, and features protective Anti-Reflective glass over the LCD panel. This weather proof monitor will easily withstand the elements outdoors. It is also ideal for wash-down environments. For this reason, it is widely used in industrial and food processing plants. The NEMA 4X rating ensures resistance to corrosion. View our entire line of waterproof rugged monitors and touch screens. For instructions on maintaining water tight integrity, follow these procedures: Cable Entry Seals for TRU-Vu Waterproof Monitors

touch screens with extended OPERATING TEMPERATURE ranges

We design the SRMHWTP-32R-P touchscreens to operate in nearly any environmental conditions. This 32 weatherproof touch screen performs in frigid conditions or blazing heat. These sunlight displays will survive and thrive. To clarify, these monitors will operate in temperatures down to -4°F (-20°C). They will also withstand brutal heat. Moreover, operating temperatures go up to 140°F (+60°C). The rugged stainless steel enclosures are waterproof. The 32"high brightness displays will provide years of reliable imaging performance. Specifically, typical MTBF for these monitors is 50,000 hours.

TRU-VU TOUCH SCREENS ARE DEPLOYED WORLDWIDE

Our 32 weatherproof touch screen have been deployed in a wide range of demanding industries. For example, industries such as military, law enforcement, manufacturing and entertainment will benefit. 32" bright touchscreens are also deployed in the inspection, marine, oil & gas sectors. Industrial and transportation industries also utilize this popular model. Most importantly, TRU-Vu monitors are backed by our full 3-Year Warranty. This ensures you of many years of reliable service for your high bright outdoor display.

In conclusion, see our full line-up of industrial-grade Sunlight Readable and Daylight Readable. This highlights all of our high brightness monitors. Additionally, you'll find the sunlight readable touch screens in all the sizes and configurations available. Our full range of waterproof monitors and touch screens are available for any outdoor use.

OUR TECHNICAL EXPERTS ARE READY TO HELP YOU FIND THE BEST DISPLAY

With over 200 LCD monitors and touch screens on our site, selecting the ideal weatherproof touch screen solution may be a bit overwhelming. To help narrow-down the choices, check out our Advanced Search Tool. For example, this enables you to filter by features important to you. Browse our 21"+ size monitors and touch screens, or view only bezel-less monitors. TRU-Vu can provide modified or Custom OEM LCD Displays. Private Label Monitors are also an option if you have very specific requirements. Visit our wide range of LCD monitor mounts and stands to complete your installation.

Finally, our team members are ready to help! We can determine the exact solution that will meet your specific needs. Certainly, TRU-Vu will help provide crystal-clear images for your operating requirements. Call (847) 259-2344 today to speak with one of our specialists. Above all, we will listen. It's one of the things we do best. Our professional advisors will ensure the monitor or touch screen you receive will be and do everything you had hoped it would!

If you prefer, fill out a quick form with your requirements, and we will guide you to the proper models that will work best.

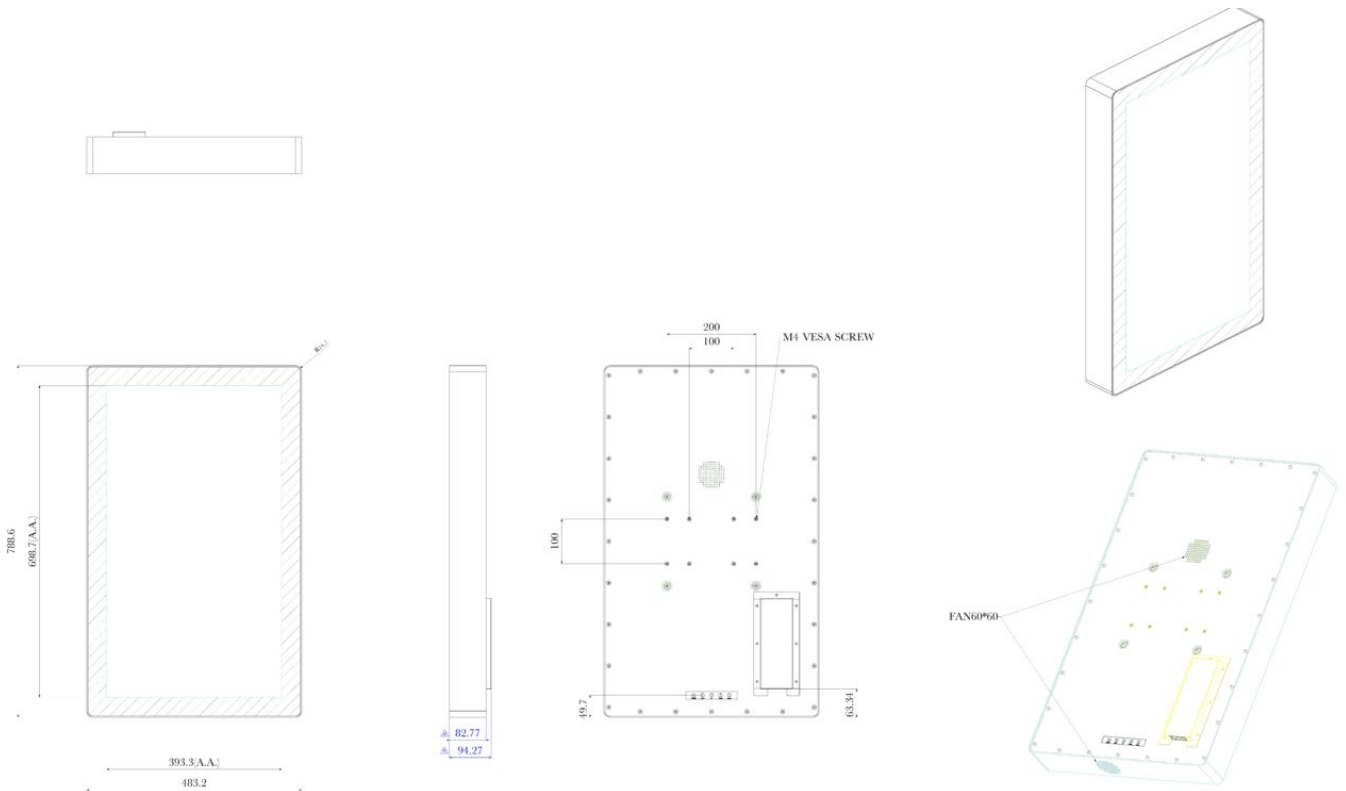
SPECIFICATIONS

	SRMHWTP-32R-P
LCD Panel	32" Color AMVA3 Panel; LED Backlights
Touch Screen Type	Projected Capacitive Touch 10 point
Touch Interface	USB
Display Resolution	1920 x 1080 (Full HD)
Viewable Area	28.39" (W) x 16.36" (H) (721.2 x 415.65mm)
Pixel Pitch	0.3637mm
Display Colors	16:7 M

	SRMHWTP-32R-P
Aspect Ratio	16:9
Brightness	1,500 nits
Ambient Light Sensor	Standard
Contrast Ratio	3,000:1
Viewing Angle	178° (H) x 178° (V)
Mode	Portrait
Response Time	8 GtG
Control	OSD (On-Screen Display) via Rear Panel Pushbuttons
Video Inputs	VGA, HDMI, DisplayPort
Power Requirement	24VDC/90-240VAC
Power Consumption	TBD
Enclosure	Zero-Bezel Front, Stainless Steel Rear
Enclosure Rating	NEMA 4X (except bottom has fan covered in fabric)
Mounting	100x100mm and 200x100mm Rear VESA Mount Holes
Operating Temperature	-4° to 140° F (-20 to 60° C)
Humidity	5 - 90% RH
Shock	50G Half-sine
Vibration	1.5G rms 10-200Hz
Dimensions	19.02" (W) x 30.97" (H) x 3.71" (D) (483.2 x 788.6 x 94.27 mm)
Weight	48 lbs (21.78 kg)
Warranty	3 Years

Note: Specifications subject to change without notice.

DIMENSIONS (MM)



Model Name : SRMHWP-32R-P

UNLESS OTHERWISE SPECIFIED	
LENGTH	TOLERANCE
0-6	±0.10
7-30	±0.20
31-100	±0.30
101-300	±0.50
301-UP	±0.70
ANGLE	+1.0°

Standard Accessories:

- AC Power Cord
- HDMI Cable
- USB Cable
- 2.5mm Locking Power Pigtail Cable (for 24VDC)

Available Options:

- Private-Label