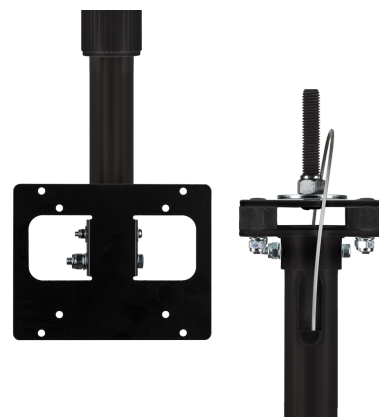


## CE-CM-SX-3-B

### Telescopic Ceiling Mount LCD/PVM Pole

- Recommended for LCD or PVM up to 35 lbs
- Mounts to Steel Web Truss or Strut Channel with One Bolt
- Adjustable from 1' 6" to 2' 8" from Ceiling
- Adjustable Tilt (0°~40°) and Pan (360°)
- Includes Safety Cable
- Leveling Plate for Uneven Ceilings
- VESA 75×75 & 100×100 (M4)
- UL Listed



Adjustable from 1' 6" to 2' 8" from Ceiling, this telescopic ceiling mount pole is compatible with nearly any LCD or PVM monitor up to 35 lbs. A matching VESA 75 and 100 compliant mounting plate is included. [View all mounting brackets and bases.](#)