

April 26 Newsletter

TAA & NDAA Compliant LCD Monitors and Touchscreens

When your project requires strict adherence to federal regulations, TRU-Vu's TAA & NDAA compliant LCD monitors and touchscreens deliver peace of mind without compromising performance. Designed for government, defense, and mission-critical applications, TRU-Vu offers over 100 models that meet Trade Agreements Act (TAA) and National Defense Authorization Act (NDAA) requirements, ensuring eligibility for federal procurement while eliminating compliance concerns. With a wide range of sizes, configurations, and customization options, TRU-Vu makes it easy to specify the right solution for your exact application.

Beyond compliance, TRU-Vu monitors are built to thrive in demanding environments. From high-bright sunlight readable displays to rugged, weatherproof, and extreme-temperature models, our solutions are engineered for reliability in the field. Backed by U.S.-based engineering, repair services, and lifetime support, you can count on long-term performance and responsiveness. When compliance, durability, and support matter most, TRU-Vu is the clear choice.

For More Information, Click [HERE](#)

Rugged monitors for mobile applications

Mobile and vehicle-mounted environments expose displays to constant vibration, shock, extreme temperatures, and unstable power. Standard commercial monitors simply are not designed to withstand these conditions, often leading to premature failures, costly downtime, and ongoing service issues. TRU-Vu rugged monitors are purpose-built for these demanding environments, delivering reliable performance in mobile platforms where uptime and safety are critical.

Every TRU-Vu display incorporates TRU-Tuff shock and vibration treatment, securing internal components, stabilizing wiring, and reinforcing construction to withstand continuous motion and harsh operating conditions. With wide temperature ranges, native 9-36 VDC power compatibility, and sealed enclosures for protection against dust and moisture, TRU-Vu monitors are engineered to extend service life and reduce field failures. Whether deployed in heavy equipment, transportation systems, or remote field operations, TRU-Vu delivers the durability and performance mobile applications demand.

For More Information, Click [HERE](#)

product spotlight

15" Outdoor Sunlight Readable Touchscreens

The SRMHETRWP-15C has earned its reputation as TRU-Vu's number one best-selling monitor for the past 3+ years by delivering unmatched performance in the harshest outdoor environments. This 15" sunlight-readable touchscreen is engineered specifically for direct sunlight applications, featuring ultra-high brightness levels of 1,500+ nits (with some configurations reaching even higher), ensuring crystal-clear visibility even in intense ambient light. Its rugged stainless steel, NEMA 4X/IP65 waterproof panel-mount enclosure protects against rain, dust, and corrosion, making it an ideal solution for kiosks, industrial controls, transportation systems, and outdoor automation.

Built for reliability and longevity, the SRMHETRWP-15C combines TRU-Vu's proven durability with advanced touchscreen options, including resistive or projected capacitive technology to suit a wide range of user interactions. Optical bonding enhances image clarity while reducing glare, and its wide operating temperature range and 9-36 VDC power input ensure dependable performance in extreme conditions. With its legacy-friendly 4:3 aspect ratio and robust construction, this model continues to be the go-to choice for OEMs and system integrators who demand consistent uptime, superior visibility, and long-term field reliability in outdoor applications.

For More Information, Click [HERE](#)

one partner. multiple industrial solutions

As part of Global Point Technology Group (GPTG), TRU-Vu Monitors is backed by a powerful network of specialized industrial companies delivering complete, integrated solutions across displays, motion, controls, interfaces, and global sourcing. GPTG brings together seven U.S.-based brands with 300+ employees and global manufacturing capabilities, helping customers reduce vendor count, improve system compatibility, and streamline procurement with a single trusted partner.

The GPTG Family Includes:

- TRU-Vu Monitors – Rugged industrial LCD monitors and touchscreens designed for 24/7 operation in demanding environments; sunlight-readable, optically bonded, and fully customizable
- GOT Interface – Custom interface devices including keypads, membrane switches, capacitive touch, and embedded displays with full design and firmware integration
- Klauber Machine & Gear – Precision AC/DC gearmotors and custom gear reducers built to exact OEM specifications with full in-house manufacturing
- American Control Electronics – Complete motor control systems including servo/stepper drives, SCR/PWM controls, and NEMA enclosures
- Global Point Sourcing Solutions – Global manufacturing and supply chain support including castings, PCBAs, cable harnesses, and full BOM sourcing across multiple countries

Together, GPTG delivers a unique advantage: fewer suppliers, faster execution, lower total cost, and fully integrated solutions from a single, trusted source.

For More Information, Click [HERE](#)

March 26 Newsletter

New from tru-vu!

15.6" USB-C Medical Monitors

Introducing TRU-Vu's new MMZBTP-15.6USBC which combines the proven performance of our 15.6" medical-grade touchscreen platform with the convenience of modern USB-C connectivity. Designed for healthcare, OEM, and industrial applications, this Full HD display delivers crisp image quality, reliable multi-touch interaction, and a sleek, bezel-less design that simplifies cleaning and supports hygienic environments. With single-cable USB-C for video, touch, and power, integration has never been easier, making it an ideal solution for medical carts, diagnostic systems, and space-constrained installations.

Key Features & Benefits:

- 15.6" Full HD (1920 x 1080) resolution for sharp, detailed images
- USB-C connectivity for video, touch, and power through a single cable
- Projected Capacitive (P-Cap) touchscreen with multi-touch capability
- USB Output to Power Auxiliary Device
- Bezel-less, edge-to-edge glass for easy cleaning and improved hygiene
- Medical-grade design compliant with UL 60601 and IEC standards
- Fanless architecture for silent, reliable operation in sterile environments
- Wide 178° viewing angles for consistent image clarity from any position
- Lightweight design with VESA mounting for flexible installation options
- Built-in speakers and auto-restart after power loss for added functionality

For More Information, Click [HERE](#)

tru-vu at seaworld!

creating smiles through technology

At Sesame Street Land inside SeaWorld Orlando, families are immersed in a vibrant, hands-on environment where learning and play come together.

Guests can walk down the iconic street, explore interactive attractions, and engage with beloved characters like Elmo and Big Bird in a setting designed to encourage participation, creativity, and discovery. From music and games to interactive exhibits, every element is built to captivate young minds and create unforgettable experiences.

Behind the scenes, TRU-Vu's rugged industrial monitors and touchscreens help make these interactive moments possible. Designed for continuous use in high-traffic, public environments, TRU-Vu displays deliver the durability, reliability, and visual clarity required for theme park installations. Whether powering engaging touch-based activities or delivering bright, vivid visuals in challenging lighting conditions, TRU-Vu monitors ensure seamless performance, helping transform Sesame Street Land into a dynamic, immersive learning environment where technology and imagination meet.

For More Information, Click [HERE](#)

product spotlight

21.5" Sunlight Readable Touchscreens

The SRMTP-21.5G-36A 21.5" sunlight readable touchscreen monitor is engineered to deliver exceptional clarity, durability, and responsiveness in even the harshest environments. Featuring a high-brightness display with 1,000+ nits, over 3-5x brighter than standard monitors, this zero-bezel, full HD touchscreen ensures crystal-clear visibility in direct sunlight and high ambient light conditions. Built with industrial-grade components and TRU-Tuff treatment, it's designed to withstand extreme temperatures, shock, and vibration, making it an ideal solution for demanding applications across industrial, transportation, and outdoor environments.

Key Features & Benefits:

- 1,000 nits brightness for full sunlight readability
- 21.5" Full HD (1920 x 1080) resolution for sharp, detailed images
- Projected Capacitive (PCAP) touchscreen for precise, responsive interaction
- Sleek zero-bezel, all-glass front with anti-glare surface
- Rugged aluminum enclosure, durable yet lightweight for easy integration
- TRU-Tuff treatment for enhanced shock and vibration resistance
- Wide operating temperature range: -4°F to 176°F (-20°C to 80°C)
- Multiple inputs: HDMI, DisplayPort, and DVI for flexible connectivity
- Auto restart after power loss + lockable OSD controls for reliability

For More Information, Click [HERE](#)

ip & nema rating explained

Understanding IP and NEMA ratings is essential when selecting displays and enclosures for demanding environments. These standardized rating systems define how well equipment is protected against external elements like dust, water, and other environmental hazards, helping engineers and buyers choose the right solution with confidence. IP (Ingress Protection) ratings specifically measure resistance to solid objects and liquids using a two-digit code, while NEMA ratings go a step further by also addressing factors such as corrosion, atmospheric conditions, and overall enclosure durability. Together, these ratings provide a clear, reliable way to evaluate performance and ensure long-term reliability in industrial, outdoor, and high-exposure applications.

For a Complete Guide to IP & NEMA Ratings, Click [HERE](#)

February 26 Newsletter

TRU-Vu Outdoor Displays Bring Orbiter Tracking & Timing Data to Life

When accurate timing, rugged durability, and unmatched outdoor visibility are essential, TRU-Vu's SRWM-24Z-SS 24" Sunlight Readable Weatherproof Monitors deliver. Built to thrive in bright sunlight and harsh weather, these robust displays are an ideal match for showcasing real-time data from Orbiter's Tracking and Timing system. Orbiter's solution revolutionizes race timing with cutting-edge RFID technology that provides precise lap counts, split times, pace data, and event results. From outdoor track meets and cross-country races to cycling events and field day challenges, TRU-Vu's high-brightness, weatherproof 24" screens ensure every student, athlete, coach, and spectator can instantly read critical results, even in direct sun or inclement conditions.

Designed for simplicity and adaptability, Orbiter's Tracking and Timing system is especially ideal for schools, colleges, universities, and sports programs that need reliable timing without complex infrastructure. Easy setup and intuitive operation mean athletic directors and volunteers can deploy the system quickly, while the ultra-precise RFID detection ensures consistent accuracy across multiple participants and race formats. By pairing Orbiter's flexible timing platform with TRU-Vu's durable monitors, schools can confidently display live results, leaderboards, and heat times outdoors, all with crisp, sunlight-readable clarity and rugged hardware built to withstand rain, dust, and outdoor rigors. Together, these solutions elevate event management, enhance participant experience, and provide dependable performance from the starting gun to the final lap.

To connect with Orbiter:
Visit: <https://www.orbiter.com/>
Call: 888-816-4366
Email: info@orbiter.com

bigger and brighter! **tru-vu's 23.8" panel mount touchscreen**

The TRU-Vu SRMTPWP-23.8R 23.8" Sunlight Readable Outdoor Panel Mount Touchscreen delivers a noticeably larger viewing area than most traditional panel mount monitors, providing enhanced visibility, improved user interaction, and more on-screen real estate for demanding outdoor applications. With its expansive 23.8-inch display and Full HD resolution, this rugged monitor is ideal for environments where clear data presentation and intuitive touch control are critical. Designed specifically for outdoor use, it features a high-brightness LED backlight of at least 1,000 nits, ensuring exceptional readability even in direct sunlight or high ambient-light conditions.

Engineered for durability and long-term performance, the SRMTPWP-23.8R features a waterproof, stainless steel panel mount enclosure that protects against harsh weather, moisture, and challenging industrial conditions. Its sleek panel mount design allows for flush installation into kiosks, equipment panels, or outdoor systems, providing both space efficiency and a professional appearance. The responsive touchscreen interface enhances usability in high-traffic environments, while the monitor's rugged construction and sunlight-readable performance make it an ideal solution for outdoor kiosks, industrial controls, transportation systems, and other mission-critical applications requiring a larger, highly reliable display.

For More Information, Click [HERE](#)

tru-vu helps keep trains rolling along

Railroad tracks require continuous inspection and maintenance to ensure safety, reliability, and long-term performance. Our rugged high-brightness touchscreen monitors have become a preferred display solution in rail maintenance machinery, delivering dependable performance in the harsh conditions commonly encountered in railway environments. TRU-Vu provides industrial-grade monitors and touchscreens designed specifically for use in track maintenance equipment, where exposure to extreme temperatures, vibration, dust, moisture, and direct sunlight demands exceptional durability and reliability. Our sunlight-readable displays ensure operators can clearly view critical system data and controls even in bright outdoor conditions, helping maintenance crews perform tasks efficiently while keeping rail networks operating safely and smoothly.

Engineered for rugged industrial applications, our touchscreen monitors are built to withstand the intense shock and vibration associated with heavy rail machinery while supporting continuous operation in demanding field environments. Their responsive touch functionality enables intuitive control of complex diagnostic and operational systems, allowing crews to monitor track conditions, equipment status, and maintenance processes in real time. By delivering reliable visibility, durability, and user-friendly performance, our rugged displays help maximize uptime and productivity for rail maintenance operations. The result is improved efficiency for maintenance teams and enhanced safety for rail infrastructure, reinforcing TRU-Vu's role as a trusted technology partner in keeping trains rolling reliably day after day.

For More Information, Click [HERE](#)

Tru-vu's u.s.-based inventory management ensures reliable supply and zero surprises

Did you know over 95% of TRU-Vu Monitors are TAA Compliant?

In today's global manufacturing environment, supply chain disruptions, production delays, and shipping uncertainties have become an ongoing concern for businesses across nearly every industry. For OEMs, systems integrators, and equipment manufacturers that rely on rugged LCD displays and touchscreens, even minor delays can disrupt production schedules, increase costs, and impact customer satisfaction. To address these challenges, TRU-Vu Monitors offers a dedicated U.S.-based inventory management program designed to ensure consistent product availability, predictable delivery timelines, and uninterrupted operations for its customers.

By allowing customers to place blanket orders with scheduled ship dates over a 12-month period, TRU-Vu enables proactive planning and strategic inventory positioning within the United States. This forward-thinking approach allows TRU-Vu to maintain sufficient domestic inventory levels, ensuring customers receive the monitors they need when they need them, without waiting for overseas production or facing unexpected supply chain delays.

To learn more, email us at info@tru-vumonitors.com or call 847-259-2344

January 26 Newsletter

TRU-Vu Monitors Shine at College Football Championship

On Monday at Hard Rock Stadium just outside Miami, Florida, fans were treated to an incredible College Football National Championship game that came down to the final play. The energy in the stadium reflected the magnitude of the moment, with every drive, replay, and scoring opportunity keeping fans fully engaged until the very end. Fans seated in the exclusive field-level suites known as The Nine were able to follow every second of the broadcast on their own TRU-Vu sunlight-readable outdoor monitors, ensuring a premium viewing experience without missing a single detail of the action. TRU-Vu outdoor monitors are ideally suited for demanding, open-air stadium environments like Hard Rock Stadium, where intense sunlight, heat, humidity, and exposure to the elements are constant challenges. Their high-brightness, sunlight-readable LCDs deliver clear, vibrant images even under direct Florida sun, allowing fans to comfortably view the broadcast at all times. Housed in rugged stainless-steel enclosures, these monitors are designed to withstand moisture, corrosion, and harsh coastal conditions, while their weather-resistant construction helps protect internal components during rain and high humidity. Combined with industrial-grade reliability and support for continuous operation, these features make TRU-Vu monitors a dependable display solution for large outdoor venues where performance, durability, and visibility are essential on game day.

For More Information, Click [HERE](#)

Large Format Touchscreen Monitors - Now Shipping!

Engineered for reliability and performance, these rugged large-format touchscreens deliver crisp Full HD or 4K UHD images with brightness levels up to 800 nits for excellent visibility in a wide range of lighting conditions. Featuring responsive Projected Capacitive multi-touch functionality, they provide smooth, accurate interaction and are ideal for demanding industrial, commercial, and other high-traffic environments where reliability is critical.

Designed for true 24/7 operation, each model is built with a durable, high-quality metal enclosure that stands up to harsh conditions, vibration, and continuous use. Advanced Projected Capacitive (PCAP) touchscreen technology ensures precise, intuitive touch response, even during extended operation.

With robust construction, dependable performance, and proven durability, these large-format touchscreens are a smart choice for mission-critical applications. Best of all, they're in stock now and ready to ship, so you can deploy the performance you need without the wait.

Click any of the three models below for more information:

VL-ZBTP-32T (32") VL-ZBXTTP-43T (43") VL-ZBXTTP-55T (55")

Full HD Panel Mount Touchscreen Monitors

The TRU-Vu Monitors SRMTPWP-15.6R36 is a rugged 15.6 inch panel mount touchscreen designed for reliable performance in challenging indoor and outdoor applications. It features a sharp 1920 x 1080 Full HD resolution that delivers clear, detailed video, even for graphics-intensive content. The integrated projected capacitive touchscreen provides fast, accurate touch response with the durability required for frequent, all-day use.

Engineered for flexibility and long-term reliability, this widescreen monitor supports a wide 9 to 36 VDC power input, making it easy to integrate into a variety of systems and vehicles. Its wide operating temperature range of minus 22 degrees Fahrenheit to 185 degrees Fahrenheit ensures dependable operation in extreme cold or heat. Combined with its water-resistant panel mount design, this touchscreen is an ideal solution for OEMs and integrators who need a high-performance display that holds up in real-world conditions.

For More Information, Click [HERE](#)

TAA Compliant Monitors & Touchscreens

Did you know over 95% of TRU-Vu Monitors are TAA Compliant?

The Trade Agreements Act (TAA) of 1979 requires the U.S. government to only buy products that are made in the U.S. or in designated countries. A product is considered TAA compliant if it's manufactured or "substantially transformed" in the U.S. or in a designated country. Substantial transformation can be demonstrated by showing that at least 50% of production took place in a TAA-approved country, or that the changes made were essential to the product's purpose. The country of origin for a TAA compliant product is determined by the last substantial transformation it undergoes before being exported to the U.S.

If you are working with a Government agency, chances are they will require TAA compliant products. The majority of LCD monitors do not meet TAA requirements as they are mostly manufactured in mainland China. Fortunately, over 95% of TRU-Vu monitors are manufactured in a TAA compliant country.

The next time you're in need of a TAA compliant LCD monitor or touchscreen solution, be sure to give us a call!

For a Complete List of TRU-Vu TAA Monitors, Click [HERE](#)

December 25 Newsletter

2025 Recap

top five most popular models of 2025

VM-21.5U-NBS24

21.5" 24VDC Industrial grade lcd monitor

The VM-21.5U-NBS24 is a rugged 21.5" industrial-grade monitor engineered for demanding 24/7/365 environments. Hardened by TRU-Tuff construction, featuring RTV silicone-sealed connections, secured wiring, thread-locked screws, and a sturdy ABS enclosure, it withstands the most challenging applications. Offering versatile connectivity (VGA, HDMI, composite BNC loop-thru), low-voltage 24VDC power requirements, auto-restart on power loss, lock-out controls, it's built for reliability and ease of integration.

vmm-19u-24s

19" 4:3 Multi-voltage industrial grade lcd monitor

The VMM-19U-24S is a rugged 19" industrial-grade LCD monitor, offering a crisp 1280 x 1024 SXGA resolution with a balanced 5:4 (aka 4:3) aspect ratio, perfect for legacy machine vision setups, analog camera surveillance, and industrial A/V systems. It supports versatile power options (12 VDC, 24 VDC, or 90-240 VAC via included AC adapter), includes lockable on-screen controls, auto-restart after power loss, and is backed by a 3-year warranty and TAA compliance for long-term reliability.

srmh-21.5z

21.5" Sunlight Readable LCD Monitor

The SRMH-21.5Z is a rugged, sunlight-readable 21.5" industrial LCD engineered for extreme ambient light conditions. Delivering a stunning 1,500 nits brightness, 5 to 6 times brighter than standard monitors, its Full HD 1920x1080 MVA panel with 178° viewing angles ensures crisp visuals even in direct sunlight. Boasting over 50,000 hrs MTBF Featuring HDMI, VGA, HD-SDI and BNC loop-through inputs, plus an ambient light sensor, it offers reliable performance in UAV/Drone, military, transportation, and outdoor kiosk applications.

srmh-13.3u-36

The SRMH-13.3U-36 is a rugged, ultra-bright 13.3" sunlight-readable monitor, designed to thrive in extreme environments. Its Full HD 1920x1080 panel delivers a powerful 1,500 nits brightness, five times brighter than typical screens ensuring crisp visuals even under direct sunlight, while a built-in ambient light sensor optimizes viewing comfort. It is built to withstand wide temperature swings from -4 °F to 158 °F (-20 °C to +70 °C) and comes backed by a 3-year warranty and TAA compliance, making it ideal for rugged high bright applications where durability meets daylight visibility.

SRMHETRWP-15c **15" 4:3 Sunlight Readable Outdoor Touchscreen**

The SRMHETRWP-15C is a rugged 15" outdoor waterproof panel-mount touchscreen monitor designed for demanding industrial and outdoor applications. It delivers sunlight-readable performance with 1,800 nits brightness, ensuring clear visibility even in direct sunlight. Built with a stainless steel NEMA 4X/IP65 enclosure and a 5-wire resistive touch interface, it withstands harsh environments while providing reliable user interaction. The monitor also features an automatic ambient light sensor and wide operating temperature range, making it versatile for outdoor kiosks, industrial control panels, and transportation systems.

November 25 Newsletter

Dominate the Track with Sunlight-Readable Monitors

When every second counts on the track, race teams cannot afford to have their data hidden by glare or harsh ambient light. That is why high-performance crews rely on TRU-Vu monitors engineered for the demanding world of auto racing. These specialized displays deliver brightness levels from 1,000 to 2,500 nits, far beyond the 200 to 300 nits typical of consumer screens. This ensures timing, speed and scoring information remains clear and visible even under intense sunlight. Whether during practice sessions, qualifying runs or full-throttle competition, crews benefit from consistent visibility and confidence as they monitor lap times, telemetry and strategy in real time.

From the pit wall to the tower, TRU-Vu monitors are built to withstand the harsh, vibrational and high-ambient-light conditions that racing teams face every day. Industrial-grade components, rugged enclosures and dependable 24/7 performance make these displays ideal for applications where reliability is essential. With TRU-Vu in place, teams stay fully connected to their data-driven decisions regardless of the environment. Engineers, crew chiefs and drivers gain uninterrupted access to critical information, helping them maintain focus as they push for the checkered flag

For more information, Click [HERE](#)

Customizable, Brand-Ready Displays for Every Industry

At TRU-Vu Monitors, we understand that off-the-shelf displays often fall short of meeting specialized requirements, so we've built a custom monitor program designed to bridge that gap. You can define everything from screen size, brightness levels, and touch technologies to enclosure material, color, mounting style, and video inputs. We also offer private labeling options such as custom logos, bezels, colors, splash screens, and packaging, making our solutions ideal for OEMs that need a consistent, branded product that seamlessly fits into their equipment or system.

Beyond hardware customization, TRU-Vu provides long-term availability for five to seven years or more, ensuring OEMs have a stable, repeatable solution for ongoing production. We can integrate embedded devices, modify firmware, and assign exclusive model numbers to protect your design and investment. Whether you need a rugged outdoor display, a kiosk-ready touchscreen, or a monitor engineered directly into a vehicle, medical device, or industrial machine, TRU-Vu delivers a purpose-built solution that looks, performs, and represents your brand exactly the way you envisioned

FOR MORE INFORMATION, CLICK [HERE](#)

Product Spotlight

15.6" Medical Grade Touchscreen Monitor

The MMZBTP-15.6G-XG is a 15.6" Full-HD (1920 x 1080) medical-grade touch-screen monitor designed for clinical, surgical and OEM environments where clarity, hygiene and reliability are essential. Its bezel-less ABS enclosure and easy-to-sanitize edge-to-edge all-glass front surface support infection-control requirements, while the projected-capacitive multi-touch technology provides accurate, medical glove-compatible operation. Wide viewing angles, medical certifications and a fanless

design make this model a dependable choice for medical carts, integrated systems, tele-health stations and patient-facing interfaces.

Key Features

15.6" full-HD 1920 × 1080 resolution & 500 nits of brightness

Projected-capacitive multi-touch with up to 10 touch points, medical glove compatible

Bezel-less ABS enclosure for easy cleaning and modern appearance

UL 60601-1 Edition 3.1 and IEC 60601-1-2 4th Edition certified

Wide 178° viewing angles and anti-glare surface

Auto restart after power loss

Fanless operation for quiet, reliable and hygienic performance

Built-in speakers for system alerts or audio requirements

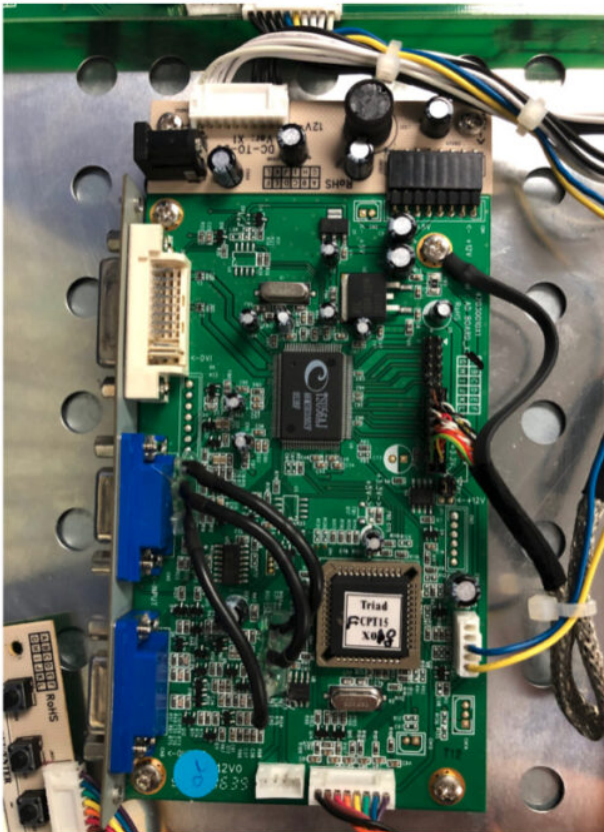
Ideal for medical carts, surgical suites, OEM integration, tele-health systems and clean-room applications

If you would like pricing or a demo unit for evaluation, we are happy to assist

For More Information, Click [HERE](#)

TRU-Vu's Exclusive TRU-Tuff Treatment

TRU-Vu's **TRU-Tuff Treatment** is engineered to provide industrial displays with maximum resistance to shock and vibration, which is essential when your equipment operates in harsh or constantly moving environments. This process includes applying RTV silicone to all vital components and connections, securely dressing and tie-wrapping all wiring, and using ThreadLocker adhesive on every screw. These mechanical and vibration-dampening reinforcements work together to prevent fastener loosening, wiring fatigue, and internal component movement, creating a far more durable and dependable monitor assembly.



Without TRU-Tuff



With TRU-Tuff

In real-world applications, this results in longer operational life and a significantly reduced risk of failure for rugged monitors and touchscreens used in demanding settings. Whether deployed in a vehicle, marine environment, outdoor kiosk, heavy equipment, or simulator, TRU-Tuff Treatment has been added to nearly all TRU-Vu displays to enhance durability and stability under continuous vibration. By integrating these protective measures at the factory level, customers benefit from improved reliability, fewer field-service incidents, and minimized downtime caused by vibration-related wear or failure.

For More Information, Click [HERE](#)

October 25 Newsletter

elevate your medical carts with tru-vu monitors

Upgrade your mobile healthcare platforms with the precision-engineered monitors and touchscreens from TRU-Vu, designed specifically for medical carts and OEM integrations. Lightweight yet robust, our displays range from 15.6" to 27", support DVI/HDMI/DisplayPort inputs, comply with IEC/UL 60601-1-2 4th Edition standards, and feature fan-less, bezel-free enclosures that enhance hygiene and reliability in fast-moving clinical environments.

Whether you're outfitting medication-dispensing carts, telemedicine stations, anesthesia or endoscopy systems, or designing your next OEM platform, our solutions are built for durability and operational excellence. The fan-free construction eliminates dust and reduces noise; the "zero-bezel" design minimizes germ-trapping seams and simplifies cleaning during rounds. And if your application demands ruggedized performance, our TRU-Tuff treatment adds shock and vibration resistance so you can count on consistent performance.

Let us help you select the display that fits your workflow perfectly engineered for healthcare, built for life.

For a List of TRU-Vu Medical Grade Models, Click [HERE](#)

Power Smarter With TRU-Vu's 24VDC Monitors

At TRU-Vu Monitors, we understand that mission-critical applications demand display solutions that don't just perform, they excel. That's why our 24 VDC low-voltage LCD monitors are engineered to thrive where standard AC-powered displays fall short. Designed for heavy equipment, mobile and vehicle-based installations, industrial automation, marine, transit, and other demanding environments, these monitors deliver reliable performance with simplified wiring, reduced conversion losses, and lower heat generation.

Many industrial and manufacturing facilities, heavy equipment and mass-transit systems have moved to 24 VDC LCD monitor systems. This improves operator safety, and often results in cost savings over 120 VAC systems. Additionally, they allow for easier integration into battery or vehicle-power systems (reducing the need for bulky AC inverters), lower electromagnetic interference and better safety margins around ground loops, plus the ability to deploy in mobile or remote-powered scenarios with higher efficiency. Our low-voltage monitors support a wide range of sizes and formats (from 7" up to 55"), with configurations for panel-mount, open-frame, waterproof, sunlight-readable, and custom OEM builds

For More Information, Click [HERE](#)

Product Spotlight

21.5" Sunlight Readable Touchscreen Monitors

TRU-Vu's SRMTP-21.5G-36A 21.5" Sunlight Readable Touchscreen delivers unmatched clarity, reliability, and durability in demanding environments. Engineered with our exclusive TRU-Tuff Treatment for maximum resistance to shock and vibration, this rugged touchscreen monitor is ideal for use in industrial, military, transportation, and applications where standard displays simply can't endure.

Its rugged yet lightweight aluminum enclosure ensures durability without excess weight, making installation easier in tight or mobile applications. Combined with high-brightness performance for full sunlight visibility, the SRMTP-21.5G-36A is ready for anything your environment throws its way.

Key Features:

21.5" Full HD Sunlight Readable LCD with high-brightness output

Projected Capacitive (PCAP) touchscreen for accurate, responsive control

TRU-Tuff for maximum shock and vibration resistance

Rugged yet lightweight aluminum enclosure

Wide operating temperature range and 9-36VDC power input

For More Information, Click [HERE](#)

How to Fine-Tune an LCD Display

Typically, an LCD display will have a very good image right out of the box. Additional improvements can be made to the display by adjusting the settings. The ideal tool to use is a grayscale pattern such as the SMPTE pattern (shown above) or equivalent. This will allow the Brightness and Contrast to be set correctly without guessing. For optimal image quality, set-up your monitor in the following sequence:

1. With a representative image on the screen, use the OSD (On-Screen Display) buttons to have the display "Auto Adjust". This will set the majority of the adjustments to their optimal level.
2. Set Brightness: With an image that displays Black portions, set the Brightness control to adjust these black portions so they appear black and not gray. Set too low, the whole image will appear too dark; set too high, the image will appear washed out.
3. Next, Set Contrast: With an image that has White portions, set the Contrast so that the whites are bright without becoming over-saturated. There should be some definition between white and slightly darker regions of the image.
4. Once the Brightness and Contrast are set, the color temperature can be set. Choose 9300K for a Cool (more blue) image, 6500K for a Warm (more red) image, or you can select "USER" to create a custom color temperature. Some displays may also offer a color temperature of 7500K. Color temperature can be subjective and greatly depends on the desired representation of the image.

Please note, not all video cables are manufactured to the same level of quality and the information above may not pertain to every video cable on the market. It is best to contact the cable manufacturer directly and ask them to provide you with the maximum length their specific video cable will transmit your desired video resolution before committing to a purchase.

September 25 Newsletter

YOUR #1 SOURCE FOR TAA COMPLIANT MONITORS

When it comes to TAA compliance, TRU-Vu Monitors leads the industry. We offer the widest selection of TAA-Compliant monitors available today, ensuring you have reliable, rugged, and fully compliant display solutions for government, military, aerospace, and other federal applications. While many competitors offer only a handful of models that meet these strict requirements, TRU-Vu provides dozens of sunlight readable, weatherproof, and industrial-grade LCD monitors that comply with the Trade Agreements Act. That means you can source with confidence, knowing your monitors are ready for projects that demand both durability and compliance.

Whether you need compact touchscreens, large format displays, or specialty configurations, TRU-Vu delivers dependable, high-performance monitors that check every box: rugged design, long-term availability, and full TAA compliance. With our unmatched range and proven track record, we make it simple for integrators, contractors, and procurement teams to secure the right solution for mission-critical environments. Partner with TRU-Vu for the most complete line of TAA-Compliant monitors available, backed by the support and reliability you can count on for years to come.

For a Complete List of TAA Compliant Models, Click [HERE](#)

IN CASE YOU MISSED IT...

ALL NEW INDUSTRIAL grade touchscreen monitors

TRU-Vu Monitors is proud to introduce our brand new line of industrial-grade touchscreen displays:

VL-ZBTP-32T (32") / VL-ZBXTP-43T (43") / VL-ZBXTP-55T (55")

Engineered for reliability and performance, these rugged touchscreens deliver crisp, full HD/4K images and brightness levels up to 800 nits. Featuring responsive Projected Capacitive multi-touch functionality, they are ideal for demanding industrial, commercial, and other high-traffic environments.

Designed for 24/7 operation, each model features a durable, high-quality metal enclosure to withstand demanding environments, along with state-of-the-art Projected Capacitive (aka PCAP) Touchscreen Technology for continuous use while providing precise, intuitive touch control. Best of all, they're in stock now and ready to ship, ensuring you get the performance you need without the wait!

Need a quote? Contact us at info@tru-vumonitors.com

vehicle-Ready displays built to perform

When every second counts, you need dependable technology that performs flawlessly in the field. TRU-Vu Monitors are engineered for emergency response vehicles, command trucks, mobile command centers, and other in-vehicle applications where reliability is non-negotiable. With sunlight-readable screens, operators get crystal-clear visibility in any lighting condition whether on city streets at noon or during nighttime operations. Wide operating temperature ranges, vibration resistance, and 9-36VDC power inputs ensure that our monitors deliver consistent performance in the harshest environments.

From police, fire, and EMS command vehicles to military and utility fleets, TRU-Vu Monitors keep teams connected, informed, and mission-ready. Every unit is built to withstand demanding conditions while offering the advanced features your crews rely on: touch screen options, weatherproof enclosures, and long-term availability. Backed by unmatched pre- and post-sales support, TRU-Vu is the trusted choice for agencies and organizations that can't afford downtime.

For More Information, Click [HERE](#)

PRODUCT SPOLIGHT

24" sunlight readable weatherproof monitors

The TRU-Vu SRMW-24Z-SS 24" Sunlight Readable Weatherproof LCD Monitor is built to perform in the harshest conditions. With 1,000 nits of brightness, a fully-sealed stainless steel enclosure, and IP65 weatherproof rating, this display delivers crystal-clear images in direct sunlight while withstanding rain, snow, dust, and dirt. Ideal for outdoor kiosks, marine use, industrial vehicles, and other demanding applications, it provides the reliability and durability you need where failure isn't an option.

1,000 nits brightness - Sharp images even in direct sunlight

Fully-sealed IP65 stainless steel enclosure - Weatherproof protection

Protective Anti-Reflective Glass - Extra durability for public environments

Wide operating temperature range - Reliable year-round performance

Ambient light sensor - Automatically adjusts screen brightness

Multiple video inputs - Flexible connectivity options

For More Information, Click [HERE](#)

video cable length guide

Different video signal types have maximum cable lengths beyond which image quality degrades, especially at higher resolutions. The five most common video cables used today are:

VGA

Component

DVI

HDMI

DisplayPort

In the following Cable Length Guide, TRU-Vu gives "safe" ranges for common cable types:

CABLE LENGTH GUIDE

Please note, not all video cables are manufactured to the same level of quality and the information above may not pertain to every video cable on the market. It is best to contact the cable manufacturer directly and ask them to provide you with the maximum length their specific video cable will transmit your desired video resolution before committing to a purchase.

August 25 Newsletter

New from tru-vu! industrial grade touchscreen monitors

TRU-Vu Monitors is proud to introduce our brand new line of industrial-grade touch screen monitor solutions:
VL-ZBTP-32T (32") / VL-ZBXTTP-43T (43") / VL-ZBXTTP-55T (55")

Engineered for reliability and performance, these rugged touchscreens deliver crisp, full HD/4K images and brightness levels up to 800 nits. Featuring responsive Projected Capacitive multi-touch functionality, they are ideal for demanding industrial, commercial, and other high-traffic environments.

Designed for 24/7 operation, each model features a durable, high-quality metal enclosure to withstand demanding environments, along with state-of-the-art Projected Capacitive (aka PCAP) Touchscreen Technology for continuous use while providing precise, intuitive touch control. Best of all, they're in stock now and ready to ship, ensuring you get the performance you need without the wait!

Need a quote? Contact us at info@tru-vumonitors.com

back in stock!

43" Sunlight Readable Outdoor Touchscreens

We're excited to announce that the VL-SRMHTP-43A-OF 43" Sunlight Readable Open-Frame Touchscreen Monitor is back in stock and ready to ship! Engineered for demanding industrial, commercial, and outdoor applications, this high-brightness display delivers sharp, crystal-clear images — even in direct sunlight. Its rugged design ensures reliable operation in challenging environments, making it the perfect solution for kiosks, digital signage, and other integrated systems where durability and performance are a must.

Key Features:

2,000 nits Brightness

Projected Capacitive Touch Screen

IP65 Edge-to-Edge All-Glass Front Surface

Anti-Glare Tempered Glass

Automated Ambient Light Sensor

Waterproof Touch Sensor Allows Wet Finger Operation

For more information, click [HERE](#)

PRODUCT SPOLIGHT

MEDICAL-GRADE MONITORS & TOUCHSCREENS

TRU-Vu medical grade monitors and touchscreens are certified to the latest IEC and UL 60601-1 4th Edition standards. They are used in a wide range of medical OEM equipment and systems, and hospital operating rooms. Each medical display has an IP65 edge-to-edge all-glass front design, and comes with a medical grade power supply and hospital-grade Green Dot power cord.

TRU-Vu Medical Displays are a key component in a wide range of medical OEM systems and medical diagnostic equipment. We deliver the highest quality and reliability. Consequently, TRU-Vu medical displays and medical-grade touchscreen monitors are used by leading hospitals, clinics, institutions, laboratories, and private practitioners throughout the world for:

Clinical Review
CT / MRI
Endoscopic
ENT
Fluoroscopy / Laparoscopy
Gastroenterology
Medical Workstations
Mobile Medical Carts
Operating Rooms / Robotic Surgery
Patient Charts
Telemedicine Systems
Urology

For more information, click [HERE](#)

FIVE TYPES OF TOUCHSCREENS

WHICH ONE IS BEST FOR YOU?

Did you know there are several uniquely different types of Touch Screens? The five most common types of touch screen are: 5-Wire Resistive, Surface Capacitive touch, Projected Capacitive (P-Cap), SAW (Surface Acoustic Wave), and IR (Infrared).

We are often asked, "Which type of touchscreen is the best?" The answer depends upon several factors including the application and environment.

Will it be indoors? Will it be outside, in bright sunshine or pouring rain? Will the users have gloves on? If so, what type and how thick are the gloves? How important is image quality?

Our Touchscreen Technology Comparison will help educate you about the different features, attributes and capabilities of each style of touchscreen.

July 25 Newsletter

2025 First half recap
top five most popular models year to date

VM-21.5U-NBS24

21.5" 24VDC Industrial Grade LCD MonitorThe **VM-21.5U-NBS24** is a rugged 21.5" industrial-grade monitor engineered for demanding 24/7/365 environments. Hardened by TRU-Tuff construction—featuring RTV silicone-sealed connections, secured wiring, thread-locked screws, and a sturdy ABS enclosure—it withstands the most challenging applications. Offering versatile connectivity (VGA, HDMI, composite BNC loop-thru), auto-restart on power loss, lock-out controls, and low 25 W power draw at 24 VDC (adaptable to 90-240 VAC), it's built for reliability and ease of integration.

VMM-19U-24S

19" 4:3 Industrial Grade LCD Monitor

The **VMM-19U-24S** is a rugged 19" industrial-grade LCD monitor, offering a crisp 1280 × 1024 SXGA resolution with a balanced 5:4 (aka 4:3) aspect ratio—perfect for legacy machine vision setups, analog camera surveillance, and industrial A/V systems. It supports versatile power options (12 VDC, 24 VDC, or 90-240 VAC via included AC adapter), includes lockable on-screen controls, auto-restart after power loss, and is backed by a 3-year warranty and TAA compliance for long-term reliability.

SRMH-21.5Z

21.5" Sunlight Readable LCD Monitor

The **SRMH-21.5Z** is a rugged, sunlight-readable 21.5" industrial LCD engineered for extreme ambient light conditions. Delivering a stunning 1,500 nits brightness—5 to 6 times brighter than standard monitors—its Full HD 1920×1080 MVA panel with 178° viewing angles ensures crisp visuals even in direct sunlight. Boasting over 50,000 hrs MTBF Featuring HDMI, VGA, HD-SDI and BNC loop-through inputs, plus an ambient light sensor, it offers reliable performance in UAV/Drone, military, transportation, and outdoor kiosk applications.

SRMH-13.3U-36

13.3" Sunlight Readable LCD Monitor

The **SRMH-13.3U-36** is a rugged, ultra-bright 13.3" sunlight-readable monitor, designed to thrive in extreme environments. Its Full HD 1920×1080 panel delivers a powerful 1,500 nits brightness—five times brighter than typical screens—ensuring crisp visuals even under direct sunlight, while a built-in ambient light sensor optimizes viewing comfort. It is built to withstand wide temperature swings from -4 °F to 158 °F (-20 °C to +70 °C) and comes backed by a 3-year warranty and TAA compliance, making it ideal for rugged high bright applications where durability meets daylight visibility.

MMZBTP-21.5G-X

21.5" Medical Grade Touchscreen Monitor

The **MMZBTP-21.5G-X** is a 21.5" medical-grade touch-screen are ideal for surgical viewing, diagnostic carts, PACS, and imaging applications. Its projected capacitive multi-touch glass supports up to 10 simultaneous touch points—responsive even through surgical gloves—and the bezel-less design, with a single pane of anti-glare glass,

streamlines cleaning and eliminates germ traps. Certified to UL 60601-1 3.1 and IEC 60601-1-2 4th Edition, this fan-less unit comes in a hygienic white or black ABS enclosure with IP65-rated front, built-in speakers, and DVI-D, HDMI and DisplayPort video inputs.

June 25 Newsletter

TRU-Vu Helps Keep Trains Rolling Along

TRU-Vu provides robust displays purpose-built for the rigorous conditions encountered in rail track maintenance machinery. Our industrial-grade monitors and touchscreens are engineered to resist vibration, shock, extreme temperatures, and moisture—common challenges in rail applications. Waterproof panel-mount touchscreen models allow technicians to access rail inspection and data management systems directly, even under direct sunlight or while wearing work gloves.

Beyond environmental ruggedness, TRU-Vu monitors feature flexible integration options well-suited for mobile maintenance platforms. These displays support a wide DC voltage input, making them compatible with onboard power systems, and include interfaces like VGA, DVI, HDMI, and touch functionality for hands-on operation during diagnostics, inspections, and control tasks. Thanks to their automatic restart capability after power interruptions and continuous operation design, they help ensure that rail servicing crews can access critical visual data and equipment controls without delays—improving uptime, safety, and efficiency on the tracks.

For more information, click [HERE](#)

PRODUCT SPOTLIGHT

21.5" Sunlight readable Monitors

The SRMH-21.5Z delivers dazzling 1,500 nits high-bright performance, making it indispensable for outdoor or high-ambient-light applications—be it kiosks, outdoor workstations, or mobile equipment. Combining ruggedized build quality with smart features like automatic ambient light sensing and auto-restart after power loss, this monitor offers both premium visibility and dependable uptime. The SRMH-21.5Z pairs military-level reliability with stunning daylight performance—perfect for mission-critical, outdoor, or ruggedized deployments.

Key Features:

Ultra-Bright 1,500 nits Sunlight-Readable Display - Provides 5-6x the brightness of standard monitors, ensuring crisp, full-HD 1920x1080 visuals even under direct sun

Industrial-Grade Ruggedness - Steel enclosure with silicone-sealed connections, secured wiring, and thread-locked hardware for superior shock/vibration resistance

Smart Adaptive Controls - Integrated ambient light sensor automatically adjusts brightness, and lockable on-screen display safeguards settings

Reliable in Power Fluctuations - Auto-restart ensures the display returns to operation after outages or resets

Flexible Integration & Support - Offers full HD with HDMI, VGA, HD-SDI, composite inputs; customizable for touch options; backed by a 3-year warranty and TAA compliance

For more information, click [HERE](#)

27" 24VDC industrial lcd monitors

The VM-27 Series 27" industrial LCD monitors bring Full HD visuals and rock-solid reliability to demanding industrial and mobile applications. With a 1920x1080 resolution and 178° wide viewing angles, these monitors ensure crisp and vibrant images in control rooms, machine vision setups, surveillance stations, and simulators.

Equipped with versatile video inputs—VGA, HDMI, and composite BNC—the VM-27 adapts seamlessly to diverse setups, and its dual-voltage capability (24 VDC or 100-240 VAC) makes it an excellent fit for both mobile platforms and fixed installations.

Built for continuous 24/7/365 operation, the VM-27 delivers industrial-grade resilience with TRU-Tuff shock and vibration treatment and an auto-restart feature that ensures uptime after power interruptions.

The VM-27 Series are designed to operate 24/7/365 and are backed by our full 3-Year Warranty. This series of monitors are ideal for industrial, military, food & beverage, machine vision systems, museums, surveillance, and simulator applications.

For more information, click [HERE](#)

24"outdoor-rated waterproof monitors

The SRMW-24Z-SS is the ultimate sunlight-readable, weatherproof LCD monitor engineered to conquer the elements and elevate your outdoor viewing experience. With a dazzling 1,000 nits of brightness—three to five times brighter than standard screens—this Full HD (1920 x 1080) powerhouse cuts through even the brightest glare, delivering crisp, vibrant visuals in direct sunlight. Housed in a fully-sealed NEMA 4X stainless steel enclosure with anti-reflective glass and sealed integrity, the SRMW-24Z-SS stands up to rain, snow, dust, and corrosive wash-downs, making it a maintenance-free solution with no vents, fans, or filters to clog or fail. Count on rock-solid reliability and resilience, thanks to rugged TRU-Tuff treatment, shock and vibration protection, and an MTBF of 50,000 hours, backed by a full 3-year warranty.

Designed to thrive under the harshest conditions—from sizzling desert heat to freezing sub-zero temperatures—the SRMW-24Z-SS is perfect for a wide range of demanding industries, including military, marine, industrial, transportation, digital signage, and sports venues. Its rich feature set includes multiple video inputs (VGA, HDMI, HD-SDI, composite loop-thru), ambient light sensing with auto dim-to-black, and auto-restart after power loss, ensuring uninterrupted operation day or night. Whether deployed for outdoor kiosks, stadium displays, drive-thru confirmation screens, or critical field operations, this monitor delivers crystal-clear performance and steadfast durability—engineered to exceed your toughest expectations.

for more information, Click [HERE](#)

compare the benefits

Industrial vs Consumer Monitors

WHAT IS THE DIFFERENCE BETWEEN A CONSUMER LCD MONITOR AND AN INDUSTRIAL-GRADE MONITOR?

Why would you (should you) choose one over the other? We hear these questions all the time. People are often confused about the characteristics of each type of video monitor, and don't know which is best suited for their needs. No one wants to make the wrong decision. Industrial-grade monitors tend to have a higher up-front cost, but are they worth it?? Well, like so many other things, the answer is "It depends...."

IT DEPENDS UPON WHEN, WHERE AND HOW YOU ARE GOING TO USE YOUR VIDEO DISPLAY

Will it be at home, indoors? Will it be outside, in bright sunshine or pouring rain? Will it be mounted in a vehicle, or on a boat? What types of features do you need? Does it need to be rugged? What about the picture quality? The **LCD Monitor Comparison Guide** will help educate you about the different features, attributes and capabilities of each style of monitor.

This, in turn, should help you make an informed decision.

[VIEW OUR COMPARISON GUIDE](#)

May 25 Newsletter

Product spotlight

sunlight readable weatherproof panel mount touchscreen monitors

TRU-Vu's outdoor-rated touch screen monitor solutions are built with a rugged stainless steel panel mount enclosure, and are designed for use in the most challenging environments.

Sizes are available and in-stock from 8" to 24". All models feature:

1,000-1,500 Nits of Brightness

NEMA 4X/IP65

Ambient Light Sensor Adjusts Screen Brightness Automatically

9-36VDC Power

Auto Re-Start After Power Loss

Extreme Operating Temperature Range (ie. -30°C to 85°C)

TRU-Tuff Treatment for Maximum Resistance to Shock and Vibrations

TAA Compliant

For more information, click [HERE](#)

medical-grade monitors & touchscreens

TRU-Vu medical grade monitors and touchscreens are certified to the latest IEC and UL 60601-1 4th Edition standards. They are used in a wide range of medical OEM equipment and systems, and hospital operating rooms. Each medical display has an IP65 edge-to-edge all-glass front design, and comes with a medical grade power supply and hospital-grade Green Dot power cord.

TRU-Vu Medical Displays are a key component in a wide range of medical OEM systems and medical diagnostic equipment. We deliver the highest quality and reliability. Consequently, TRU-Vu medical displays and medical-grade touchscreen monitors are used by leading hospitals, clinics, institutions, laboratories, and private practitioners throughout the world for:

Clinical Review

CT / MRI

Endoscopic

ENT

Fluoroscopy / Laparoscopy

Gastroenterology

Medical Workstations

Mobile Medical Carts

Operating Rooms / Robotic Surgery

Patient Charts

Telemedicine Systems

Urology

For more information, click [HERE](#)

24VDC monitors and touchscreens

TRU-Vu Monitors offers a wide selection of 24VDC LCD monitors, in addition to our 12VDC video monitors. Numerous industrial and manufacturing facilities, heavy equipment and mass transit systems have moved to 24VDC video systems. This improves operator safety, and often results in cost savings over 120VAC systems. Nearly all of our monitors can be built to operate as 24VDC LCD monitors making them ideal for use in trains, buses, on ships, aircraft and industrial manufacturing plants. Demand for 24VDC monitors and 36VDC LCD displays has been increasing steadily as the lower power consumption is ideal for portable/mobile systems. This also increases operator safety, and easier installation.

For more information, click [HERE](#)

tru-vu custom monitors

Why settle for an off-the-shelf LCD monitor that's almost "good enough"? Let TRU-Vu provide a custom LCD monitor, modified LCD display, or design a custom OEM monitor to meet your needs. Above all, we can customize nearly aspect of your display, from the inputs and electronics, to screen treatments and enclosures. Custom options for embedding your own devices inside our enclosures and even private labeling it with your own name/logo and corporate identity are also available.

Certainly, your customized LCD display will receive a unique model number, to identify it as your exclusive custom LCD monitor. Most importantly, no one else can order this model. If they try, they will be referred back to you.

Lastly, we will provide long-term availability of your custom OEM monitor design where we can ensure your custom LCD monitor is available for 3 - 5 (or many more) years.

for more information, Click [HERE](#)

compare the benefits

Industrial vs Retail Monitors

WHAT IS THE DIFFERENCE BETWEEN A RETAIL LCD MONITOR AND AN INDUSTRIAL-GRADE MONITOR?

Why would you (should you) choose one over the other? We hear these questions all the time. People are often confused about the characteristics of each type of video monitor, and don't know which is best suited for their needs. No one wants to make the wrong decision. Industrial-grade monitors tend to have a higher up-front cost, but are they worth it?? Well, like so many other things, the answer is "It depends...."

IT DEPENDS UPON WHEN, WHERE AND HOW YOU ARE GOING TO USE YOUR VIDEO DISPLAY

Will it be at home, indoors? Will it be outside, in bright sunshine or pouring rain? Will it be mounted in a vehicle, or on a boat? What types of features do you need? Does it need to be rugged? What about the picture quality? The [LCD Monitor Comparison Guide](#) will help educate you about the different features, attributes and capabilities of each style of monitor.

This, in turn, should help you make an informed decision.

[VIEW OUR COMPARISON GUIDE](#)

April 25 Newsletter

New from tru-vu! shatterproof industrial grade touchscreen monitors

The VMTR-17R-OFSP 17" Open Frame Shatterproof Touch screen Monitor is engineered for durability and reliability in demanding environments. It features a 2.8mm IK08-rated protective glass for superior impact resistance, enhanced with a conductive ITO film layer. This advanced construction ensures that, in the rare event of breakage, the ITO film holds the glass in place—preventing shards from detaching and maintaining user safety. Equipped with 5-Wire Resistive touch technology, the VMTR-17R-OFSP offers versatile input options. It responds accurately to bare fingers, gloved hands, or styluses, making it ideal for a wide range of industrial and commercial applications. This technology is also highly resistant to interference from liquids, moisture, and grease—delivering consistent performance in even the harshest conditions.

Ideal applications include:

- Food Packaging and Processing facilities
- Hospitals and Healthcare facilities
- Prisons and Mental Health facilities
- Factory Automation and Manufacturing Lines

For more information, click [HERE](#)

TRU-Vu Featured Models

15" Sunlight readable outdoor touchscreens

The SRMHETRWP-15C is a rugged 15" high-brightness outdoor touch screen monitor, engineered for use in direct sunlight and harsh environments. Featuring a powerful 1500 nits LED backlight—over 5 times brighter than standard displays—this waterproof panel mount monitor delivers crystal-clear visuals even in intense ambient light. Designed with 5-wire resistive touch technology, it's compatible with gloves and styluses. Housed in a NEMA 4X/IP65-rated stainless steel enclosure, it offers complete protection against water, dust, rust, and corrosion—making it ideal for industrial and outdoor applications.

Built with industrial-grade components, the SRMHETRWP-15C undergoes our exclusive TRU-Tuff treatment for enhanced durability. This includes silicone-sealed connections, secured wiring, and ThreadLock on all screws, ensuring superior shock and vibration resistance. Capable of operating in extreme temperatures from -22°F to 185°F, this display excels in diverse settings such as food processing plants, military applications, transportation hubs, and outdoor kiosks. Backed by a 3-year warranty and featuring a 50,000-hour MTBF, it's a reliable, high-performance solution for demanding environments worldwide.

For more information, click [HERE](#)

21.5" medical grade LCD monitors

The TRU-Vu MMZB-21.5G-X is a 21.5" medical-grade display designed for use in hospitals, surgical suites, and diagnostic environments. It meets UL 60601-1 Edition 3.1 and IEC 60601-1-2 4th Edition standards, making it ideal for critical care settings, medical carts, and imaging systems including endoscopy, PACS, and fluoroscopy. With 1920 x 1080 Full HD resolution, super-wide 178° viewing angles, and a high contrast ratio, this monitor delivers razor-sharp, flicker-free images that enable fast, accurate decision-making in demanding medical environments.

The MMZB-21.5G-X features a bezel-less, full-flat glass design housed in a rounded ABS enclosure for easy cleaning and improved hygiene. Its fan-less construction enhances reliability, reduces noise, and prevents the spread of airborne contaminants—key for sterile spaces. Rear VESA mounting, integrated speakers, and compatibility with a variety of medical mounting systems make installation simple and versatile across a wide range of clinical applications. Projected Capacitive Touchscreen models are also available and in-stock.

For more information, click [HERE](#)

13.3" sunlight readable lcd monitors

The SRMH-13.3U-36 is a rugged 13.3" monitor built for use in direct sunlight and other high ambient-light environments. Featuring a full HD 1920 x 1080 resolution and ultra-bright 1500 nits LED backlighting—over 3 to 5 times brighter than standard screens—these displays deliver crystal-clear images even in the harshest lighting. Designed for outdoor and industrial use, their high brightness and 16:9 aspect ratio make them ideal for demanding applications.

Built with industrial-grade components and housed in a tough steel enclosure, these monitors are engineered to withstand extreme conditions. They operate in temperatures from -4°F to 158°F and are protected by TRU-Tuff treatment, including RTV silicone sealing, secure wiring, and ThreadLock on all screws. With a 50,000-hour MTBF and deployments in military, aviation, law enforcement, and more, they're backed by a 3-year warranty for long-lasting performance in the field.

for more information, Click [HERE](#)

compare the benefits

Industrial vs Retail Monitors

WHAT IS THE DIFFERENCE BETWEEN A RETAIL LCD MONITOR AND AN INDUSTRIAL-GRADE MONITOR?

Why would you (should you) choose one over the other? We hear these questions all the time. People are often confused about the characteristics of each type of video monitor, and don't know which is best suited for their needs. No one wants to make the wrong decision. Industrial-grade monitors tend to have a higher up-front cost, but are they worth it?? Well, like so many other things, the answer is "It depends...."

IT DEPENDS UPON WHEN, WHERE AND HOW YOU ARE GOING TO USE YOUR VIDEO DISPLAY

Will it be at home, indoors? Will it be outside, in bright sunshine or pouring rain? Will it be mounted in a vehicle, or on a

boat? What types of features do you need? Does it need to be rugged? What about the picture quality? The LCD Monitor Comparison Guide will help educate you about the different features, attributes and capabilities of each style of monitor. This, in turn, should help you make an informed decision.

[VIEW OUR COMPARISON GUIDE](#)

March 25 Newsletter

TRU-Vu's Preferred vl line: Economically-advanced industrial monitors & touchscreens

Our VL line of industrial monitors and touch screen monitor solutions offer an exceptional balance of quality and affordability, designed to meet the demands of various industries without compromising on performance. Engineered with durability and reliability in mind, these monitors deliver high video resolution and responsive touch functionality, even in challenging environments. Sizes range from 8" to 43" for both high bright and standard brightness models. Key features include Projected Capacitive touchscreen technology; rugged steel housings with optional IP65 front surface; worldwide certifications (UL, CE & CB), and multiple mounting options. The VL models have a 1 year standard warranty and are ideal for companies seeking robust solutions that optimize both performance and budget.

[Continue reading for information on our featured VL models](#)

43" Sunlight readable outdoor touchscreens

Our VL-SRMHTP-43A-OF 43" Sunlight-Readable Touchscreens are perfectly suited for outdoor kiosks, ticketing, vending, wayfinding, and digital signage applications. With an impressive 2,000 nits of brightness, a PCAP touchscreen, and IP65-rated edge-to-edge anti-glare tempered glass, these displays deliver exceptional performance, even in bright, direct sunlight.

[For more information, click HERE](#)

21.5" projected capacitive touchscreens

Our VL-ZBTP-21.5C 21.5" Industrial Touchscreen Monitor is a powerhouse of precision and durability, engineered to elevate your operational efficiency. With its sleek, rugged design and high-resolution display, this monitor is built with a steel enclosure to withstand the toughest environments while delivering crystal-clear visuals and intuitive Projected Capacitive touch functionality. Perfect for demanding industrial applications, it features advanced touch sensitivity, anti-glare coating, and robust connectivity options to integrate seamlessly with your existing systems.

[For more information, click HERE](#)

10.1" high bright touchscreens

Our VL-SRMTP-10.1A 10.1" Industrial Touchscreens are built for peak performance in nearly any environment. With an impressive 1200 nits of brightness, this display ensures crystal-clear visibility even in direct sunlight. The built-in ambient light sensor automatically adjusts the screen's brightness, providing optimal viewing in any lighting condition. Housed in a rugged steel enclosure and designed with an IP65-rated front surface, this touchscreen is built to withstand dust, water, and harsh conditions. Plus, with an extreme operating temperature range, it performs flawlessly in both sweltering heat and freezing cold. Ideal for a wide range of applications, this touchscreen offers durability and reliability you can count on, no matter the challenge.

[for more information, Click HERE](#)

32" high bright monitors

Our VL-SRMH-32A 32" High-Bright LCD Monitor is designed to excel in the toughest environments. With an outstanding 1,500 nits of brightness, it ensures sharp, clear visuals even under direct sunlight, offering exceptional readability in any setting. Its IP65-rated front glass provides strong protection against both dust and water, making it ideal for outdoor and industrial use. Equipped with an automatic ambient light sensor, the monitor adjusts to varying lighting conditions, ensuring optimal viewing at all times. Enclosed in a sturdy steel casing, it is built to endure harsh conditions, offering unmatched durability and long-term reliability.

for more information, Click [HERE](#)

February 25 Newsletter

New from tru-vu
43" Multi-Display HDMI Monitor

Introducing our new VMD-43L 43" Multi-Display Industrial Monitor—designed for seamless, round-the-clock operation. Built to run 24/7/365, this robust display offers unparalleled versatility with four HDMI inputs and multiple viewing options. Whether you need Full Screen, Vertical Stacked, Split Screen, Picture-in-Picture (PIP), or a dynamic 4-channel Quad mode, this monitor adapts to your specific needs with ease. Ideal for applications requiring high-performance, continuous operation, it's perfect for surveillance, control rooms, or any application demanding consistent, multi-source monitoring. Experience superior reliability and flexibility in one powerful, large-format display

For more information, click [HERE](#)

32" Sunlight readable Monitors

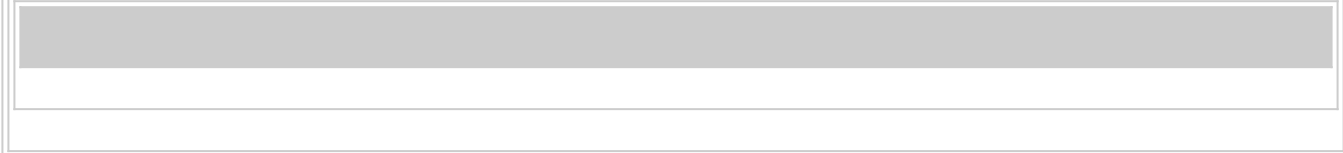
Our SRMH-32Z 32" Sunlight Readable LCD Monitor is engineered to perform in the most demanding environments. With a powerful 1,500 nits of brightness, this monitor is perfectly suited for use in direct sunlight, ensuring clear visibility even in the harshest outdoor conditions. Designed to operate across an extreme temperature range, it guarantees reliable performance in both hot and cold climates. The integrated automated ambient light sensor adjusts brightness for optimal viewing, while its versatile design allows for seamless use in both landscape and portrait orientations. Whether powered by 24VDC or 100-240VAC, this monitor is a robust, flexible solution for any industrial or commercial application. This model includes HDMI, HD-SDI, VGA, & Composite Video Inputs for use with a variety of video sources without requiring a converter.

For more information, click [HERE](#)

15.6" full hd 16:9 panel mount pcap touchscreens

Elevate your user interface with our SRMTPWP-15.6R36 15.6" Projected Capacitive Panel Mount Touchscreen, designed for demanding environments. Featuring a sharp 1920 x 1080p Full HD resolution, it ensures crystal-clear visuals for optimal user experience. The rugged stainless steel IP65-rated panel mount enclosure provides excellent protection against dust, water, and impacts, while the 1,000 nit high-bright LCD panel offers exceptional clarity, even in bright outdoor conditions. Engineered to perform in extreme temperatures from -22°F to 185°F, this touchscreen is built to thrive in any harsh setting. Reliable, durable, and versatile, it's the perfect solution for a wide range of applications.

For more information, click [HERE](#)



TRU-Vu Outdoor Touchscreens Enhance Automated Load Outs a used in kiosks, terminals, mills, weigh stations & transfer stations worldwide

With the many advantages to upgrading load-out systems, there are also challenges that should be addressed prior to installation. Technology has helped increase the efficiency, accuracy and safety of load-outs by allowing the drivers to check in, weigh in, get lane verification, and weigh out through an automated kiosk ticketing system. This eliminates manual transaction errors, is user-friendly, and is safer, allowing drivers to get accurate quick results with less labor. The kiosks are installed at drive-up truck height which allows the drivers to stay in their trucks. It can reduce liability, extend loading hours, improve traffic flow, and increase daily transactions and profits. It minimizes physical interactions between the scale house personnel and drivers to maintain social distancing as well.

Automated load-out solutions provide operators with clear, concise instructions at kiosks, grain terminals and feed mills worldwide. It is far more reliable than an app on a phone that depends on battery levels or unreliable internet service in remote areas. Various other operations such as cement, frac sand, chemical plants, mining, construction/timber, landfills, and transfer stations are also benefiting from these systems.

At the heart of many automated load-out and ticketing systems is a touch screen monitor. This enables the trucker to enter and receive information, tickets and reports quickly, easily and without station personnel. In order for optimal unattended operation, the interactive touch screen monitor must operate 24/7, and function properly in a wide variety of adverse conditions. There are several very important factors to consider when selecting, building or upgrading a load-out or ticketing system. (as featured in Feed and Grain Magazine)

To Learn About the Top Ten Challenges (and solutions) for Using Monitors in Outdoor Automated Ticketing Applications- Click [HERE](#)

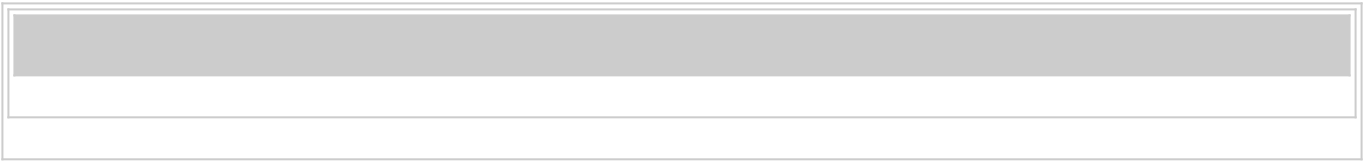
January 25 Newsletter

Product spotlight

15.6" Sunlight readable Touchscreen monitors

Discover unparalleled durability and performance with our SRMHTP-15.6G-36A 15.6" rugged touch screen monitor, engineered for extreme environments and bright conditions. Boasting a stunning 1,500 nits of brightness, this display ensures crystal-clear visibility even in direct sunlight. Its projected capacitive touchscreen provides smooth, responsive interaction and protection for the LCD screen. With maximum resistance to shock and vibration, this monitor is built to withstand the harshest conditions. Powered by a versatile 9-36VDC input, it offers flexible integration for a wide range of applications. Enhance your rugged computing experience with our high-performance Sunlight Readable touchscreen monitor, designed to meet the demands of the most challenging environments.

For more information, click [HERE](#)



21.5" Weatherproof touchscreens



Our SRMTPW-21.5Z 21.5" Sunlight Readable Weatherproof Touchscreen Monitors boast unparalleled visibility with its 1,000 nits high-brightness screen and anti-glare protective glass that ensures crystal-clear readability even under direct sunlight. Its rugged, fully-sealed (on all sides) stainless steel waterproof & dust-proof design and extreme operating temperature range (-4° to 176°F) guarantees reliable operation in any weather condition, making it perfect for any outdoor interactive application. The Projected Capacitive Touchscreen (USB) allows for up-to 10 points of multitouch functionality and is HID Compliant, meaning it is compatible with any computer running a Windows operating system without the need for drivers or calibration.

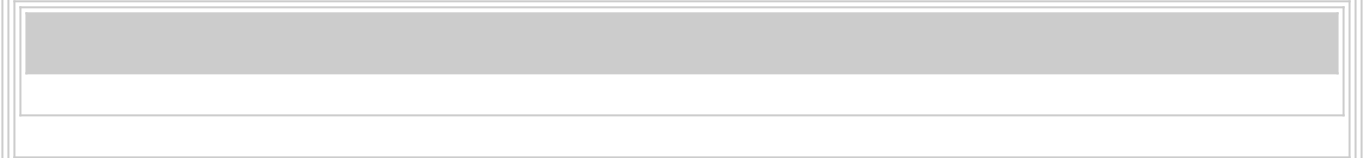
For more information, click [HERE](#)



19" industrial monitors with hdmi

Our VMM-19U-24S rugged 19" 4:3 LCD monitor is designed for any application that demands durability and performance. Now featuring HDMI, VGA & Composite BNC inputs for seamless connectivity, this monitor delivers crisp, reliable display quality in a compact, versatile format. Built to withstand the toughest environments, it includes our unique TRU-Tuff Treatment for maximum resistance to shock and vibration, ensuring longevity and consistent performance even in challenging conditions. With both 12VDC & 24VDC power inputs, it's perfect for any industrial application, especially legacy systems running 4:3 (5:4) video.

For more information, click [HERE](#)



Taa compliant monitors & touchscreens

Did you know over 95% of TRU-Vu Monitors are TAA Compliant?

The Trade Agreements Act (TAA) of 1979 requires the U.S. government to only buy products that are made in the U.S. or in designated countries. A product is considered TAA compliant if it's manufactured or "substantially transformed" in the U.S. or in a designated country. Substantial transformation can be demonstrated by showing that at least 50% of production took place in a TAA-approved country, or that the changes made were essential to the product's purpose. The country of origin for a TAA compliant product is determined by the last substantial transformation it undergoes before being exported to the U.S.

If you are working with a Government agency, chances are they will require TAA compliant products. The majority of LCD monitors do not meet TAA requirements as they are mostly manufactured in mainland China. Fortunately, over 95% of TRU-Vu monitors are manufactured in a TAA compliant country.

The next time you're in need of a TAA compliant LCD monitor or touchscreen solution, be sure to give us a call!

For a complete list of TRU-Vu TAA Compliant monitors, click [HERE](#)

December 24 Newsletter

New From tru-vu
15.6" Sunlight readable LCD Monitors with HD-SDI & HDMI

Introducing our cutting-edge **SRMH-15.6Z-36** 15.6" Sunlight Readable Monitor, engineered to deliver exceptional clarity with an impressive 1,500 nits brightness—ensuring clear, sharp images even in direct sunlight. With a full HD resolution of 1920 x 1080 (1080p/60), every detail is crisp and vibrant, whether you're working outdoors or in challenging lighting conditions. Featuring multiple input options including HDMI, HD-SDI, VGA, and Composite Video, this versatile monitor easily integrates into a wide range of setups. The built-in Ambient Light Sensor automatically adjusts the screen brightness for optimal viewing, while the Auto Restart function ensures continuous operation after a power loss. Built to withstand tough environments, the TRU-Tuff Technology provides maximum shock and vibration resistance, making it ideal for industrial, automotive, and outdoor applications. With a wide input range of 9-36VDC and backed by a 3-year warranty, this monitor is the perfect solution for professionals who need reliable performance in any condition.

Now shipping!

For More Information, Click [HERE](#)

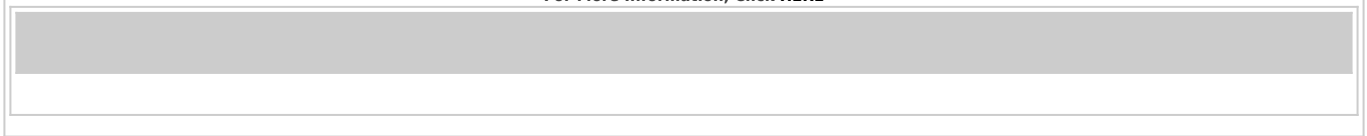


Most popular model of 2024

For the second consecutive year, the **SRMHETRWP-15C** 15" Sunlight Readable Outdoor-rated Panel Mount Touchscreen monitor has once again been our most popular model based upon units sold per year.

With an impressive 1500 nits of brightness, this highly sought-after monitor ensures clear, vibrant display visibility even in direct sunlight. Housed in a rugged stainless steel panel mount enclosure, this monitor is built to withstand the elements, featuring an IP65-rated front for superior protection against dust and water. The resistive touchscreen is fully operational even in challenging conditions, unaffected by moisture or when used with thick gloves—making it ideal for applications such as load-out operations, outdoor kiosks, pay stations, ticketing kiosks, and more. This monitor is the perfect solution for outdoor and industrial settings where durability and high performance are essential.

For More Information, Click [HERE](#)



coming in 2025

27" 4K Medical Grade Monitors and Touchscreens

New for 2025: TRU-Vu 27" 4K Medical-Grade Monitors, featuring brilliant 3840 x 2160 video resolution and 500 nits of brightness for exceptional clarity and detail in any lighting condition. Certified to the stringent IEC 60601-1 standards, this monitor ensures the highest levels of safety, performance, and reliability for medical environments. With stunning 4K resolution and a built-in DICOM setting, it provides ultra-precise imaging for diagnostic applications, surgical planning, and patient monitoring. The optional projected capacitive touch functionality offers an intuitive, responsive interface, enhancing workflow and allowing healthcare professionals to interact seamlessly with patient data and imaging. Designed for durability and long-term use, this monitor is the perfect solution for healthcare facilities seeking cutting-edge visual technology without compromising on safety or precision.

Available Options Include:

[Camera & Microphone](#)

[PCAP Touch](#)

[HD-SDI](#)

[Light Sensor](#)

[USB Hub](#)

[RFID Reader](#)

[Reading Light](#)

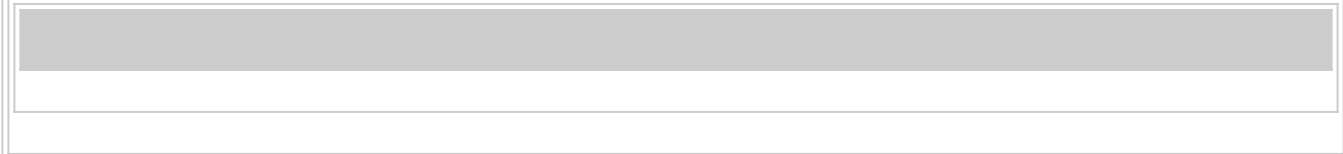
[Tabletop Base](#)

[Private Labeling](#)

[Custom Splash Screen](#)

Shipping Q1 2025. Samples available now!

For More Information, Click [HERE](#)



TRU-Vu Custom Capabilities

Why settle for an off-the-shelf LCD monitor that's almost "good enough"? Let TRU-Vu provide a custom LCD monitor, modified LCD display, or design a custom OEM monitor to meet your needs. Above all, we can customize nearly aspect of your display, from the inputs and electronics, to screen treatments and enclosures. Custom options for embedding your own devices inside our enclosures and even private labeling it with your own name/logo and corporate identity are also available.

Certainly, your customized LCD display will receive a unique model number, to identify it as your exclusive custom LCD monitor. Most importantly, no one else can order this model. If they try, they will be referred back to you.

Lastly, we will provide long-term availability of your custom OEM monitor design where we can ensure your custom LCD monitor is available for 3 - 5 (or many more) years.

Contact Us for a custom quote today!

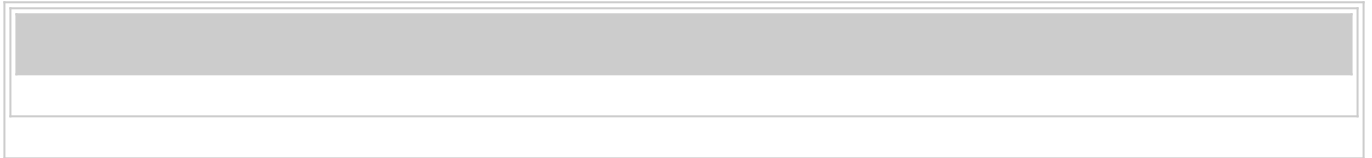
November 24 Newsletter

TRU-Vu Outdoor LCD Monitors

The sports and entertainment world utilize an increasing number of LCD video screens. Our series of sunlight-readable weatherproof LCD monitors are designed to deliver stunning visuals even in the brightest conditions with screens featuring an impressive level of brightness up to 2,500 nits. Encased in a completely-sealed weatherproof enclosure, our outdoor

monitors are built to withstand the elements, making it ideal for high-traffic environments like sports stadiums, mass transit systems, and airports. With an extreme operating temperature range up to 176°F, they ensure reliable performance in any climate. Elevate your display capabilities with this durable, high-performance monitor that excels in both functionality and visibility.

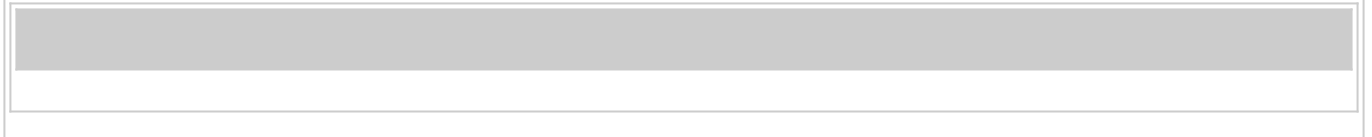
For More Information, Click [HERE](#)



New 24VDC PCap Touchscreens

Introducing our state-of-the-art 21.5" 24VDC Projected Capacitive Touchscreen, engineered for high-performance in tough environments. Housed in a rugged metal enclosure, this touchscreen delivers outstanding resistance to shock and vibration, making it perfect for industrial application. Its advanced Projected Capacitive technology ensures a seamless, intuitive touch experience, allowing for precise control even in the most demanding settings. Designed for durability and reliability, this touchscreen is your go-to solution for enhancing operational efficiency while withstanding the rigors of daily use.

For More Information, Click [HERE](#)



TRU-Tuff Treatment

WITHOUT TRU-TUFF TREATMENT



WITH TRU-TUFF TREATMENT



TRU-Vu offers a wide range of LCD monitor sizes, enclosures, and configurations. We have developed a treatment to reduce shock and vibration called TRU-Tuff. TRU-Tuff Treatment is a unique treatment to maximize shock and vibration resistance. This process includes:

1. RTV silicone on all critical components and connections
2. All wires are dressed, tie-wrapped and secured
3. ThreadLocker is applied to all screws

This is particularly crucial for monitors that may be mounted on buses, boats, automobiles, cranes, kiosks, sports stadiums, training simulators, and drones. If you're looking for a vibration solution for monitor displays or touch screens, you've found it! Visit our [Industries Served](#) page for more uses. TRU-Tuff is available on all types of TRU-Vu Displays. Both Monitors and Touch Screens benefit from the protection that TRU-Tuff provides. Whether it is an [Outdoor Waterproof](#), [Sunlight Readable](#), [Panel Mount](#), [Touch Screen](#), or [Zero-Bezel Monitor](#), TRU-Tuff Treatment will extend its life and the problems associated with shock and vibration.

TRU-Vu IP54 INDUSTRIAL DISPLAYS FOR FACTORY FLOORS

Manufacturing plants and factories often need to provide visual messages, warnings and data to plant personnel. This information is often provided via large video displays. However, these facilities can be very harsh and demanding environments. Typical consumer-grade monitors are not meant to withstand the temperature swings, humidity, shock/vibration, wash-downs, and airborne contaminants commonly found in industrial settings. TRU-Vu Monitors offers the ideal video monitor solutions for the factory floor. Features include:

- Multiple Screen Sizes Available: 55", 65", 75"
- Factory-Ready Enclosure: P54 Water, Dust & Corrosion-Resistant Aluminum
- Maintenance-Free: No Filters or Internal Fans to Replace
- Enhanced Brightness: 500 Nits (2X the brightness to see from farther distances)
- Multiple Connectivity Options: Wi-Fi, Ethernet & HDMI (all standard on each model)
- Extreme Operating Temperature: -22° to +122°F for Use in Virtually Any Factory Env
- Includes: Heavy-Duty Corrosion-Resistant Tilting Wall Mount

The TRU-Vu SXN-Series displays enable you to display real-time production data, actual vs target performance, safety information and more in nearly any environment. This is an excellent productivity improvement tool. Connect the display to your local network via Wi-Fi or Ethernet, or to a PC via HDMI, in order to display critical/useful data to your plant personnel quickly and easily. [To See Our Full Line of IP54 Factory Displays, Click HERE](#)

GPSS ANNOUNCES REBRANDING



GPSS, one of our sister companies, proudly announces the rebranding of Solid Rock, Asia Sourcing Corporation, and Global Point Technology into a unified entity, Global Point Sourcing Solutions. Founded in 1974 and headquartered in New York, Global Point Technology has been a leader in providing high-quality, custom components and engineered solutions. Established over 17 years, Solid Rock and Asia Sourcing Corporation are also leaders in providing custom engineered components. This integration will drive synergy and additional resources allowing them to bring more solutions to their customers and to expand into diversified industries. GPSS offers full supply chain solutions that includes design engineering, project management, manufacturing, quality, logistics/trade compliance, and inventory management. Their ISO 9002, ISO 13485, and ISO/TS-16949 certified facilities underscore their commitment to precision, speed, and quality. With an enhanced local inventory and a robust international presence, they are well-equipped to meet the evolving needs of their clients. As a unified brand, GPSS will provide their expanded capabilities and solutions to meet their customers' needs. For questions or further information, please fill out a contact form or a request to quote on Globalpointusa.com and their team will reach out to you promptly. You may also contact their Director of Sales, Ted Gruhn, at tgruhn@globalpointsourcing.com for any assistance that you may need.

October 24 Newsletter

TRU-Vu Medical Grade Monitors

TRU-Vu medical grade monitors and touch screen monitor solutions are certified to the latest IEC and UL 60601-1 4th Edition standards. They are used in a wide range of medical OEM equipment and systems, and hospital operating rooms. Each medical display has an IP65 edge-to-edge all-glass front design, and comes with a medical grade power supply and hospital-grade Green Dot power cord. TRU-Vu Medical Displays are a key component in a wide range of medical OEM systems and medical diagnostic equipment. We deliver the highest quality and reliability. Consequently, TRU-Vu medical displays and medical-grade touchscreen monitors are used by leading hospitals, clinics, institutions, laboratories, and private practitioners throughout the world for:

Clinical Review
CT / MRI
Endoscopic / Arthroscopic Images Review
ENT
Fluoroscopy / Laparoscopy
Gastroenterology

Medical Workstations
Mobile Medical Carts
Operating Rooms / Robotic Surgery
Patient Charts
Telemedicine Systems
Urology

To See Our Full Line of Medical Grade Mounts, Click [HERE](#)

TRU-Vu LOWEST PRICED 55" OUTDOOR COMMERCIAL DISPLAYS!

TRU-Vu is now offering their SXOBH-55-4 55" IP66 2,500 nit Optically Bonded Outdoor Displays at the lowest prices in the company's history! TRU-Vu not only offers the most robust and reliable outdoor displays on the market, but now also at the lowest price.

Don't Believe Us?
Give us a call at 847-259-2344 or
Email info@tru-vumonitors.com for a quote.
[Learn more HERE](#)

10.1" Sunlight Readable weatherproof touchscreens

The SRMPWP-10.1R36 are all-new 10.1" Sunlight Readable Panel Mounted Weatherproof PCAP Touchscreen Monitors. They feature 1,200 nits screen brightness for use in direct sunlight. We design these monitors to operate in nearly any environmental conditions. They are capable of performing in temperatures from -22° to +176°F. The rugged stainless steel enclosures are waterproof for panel mount or flush mount applications.

For more information, click [HERE](#)

TRU-Vu IP54 INDUSTRIAL DISPLAYS FOR FACTORY FLOORS

Manufacturing plants and factories often need to provide visual messages, warnings and data to plant personnel. This information is often provided via large video displays. However, these facilities can be very harsh and demanding environments. Typical consumer-grade monitors are not meant to withstand the temperature swings, humidity, shock/vibration, wash-downs, and airborne contaminants commonly found in industrial settings. TRU-Vu Monitors offers the ideal video monitor solutions for the factory floor. Features include:

Multiple Screen Sizes Available: 55", 65", 75"
Factory-Ready Enclosure: P54 Water, Dust & Corrosion-Resistant Aluminum
Maintenance-Free: No Filters or Internal Fans to Replace
Enhanced Brightness: 500 Nits (2X the brightness to see from farther distances)
Multiple Connectivity Options: Wi-Fi, Ethernet & HDMI (all standard on each model)
Extreme Operating Temperature: -22° to +122°F for Use in Virtually Any Factory Env
Includes: Heavy-Duty Corrosion-Resistant Tilting Wall Mount

The TRU-Vu SXN-Series displays enable you to display real-time production data, actual vs target performance, safety information and more in nearly any environment. This is an excellent productivity improvement tool. Connect the display to your local network via WI-FI or Ethernet, or to a PC via HDMI, in order to display critical/useful data to your plant personnel quickly and easily.

To See Our Full Line of IP54 Factory Displays, Click [HERE](#)

GPSS ANNOUNCES REBRANDING



GPSS, one of our sister companies, proudly announces the rebranding of Solid Rock, Asia Sourcing Corporation, and Global Point Technology into a unified entity, Global Point Sourcing Solutions. Founded in 1974 and headquartered in New York, Global Point Technology has been a leader in providing high-quality, custom components and engineered solutions. Established over 17 years, Solid Rock and Asia Sourcing Corporation are also leaders in providing custom engineered components. This integration will drive synergy and additional resources allowing them to bring more solutions to their customers and to expand into diversified industries. GPSS offers full supply chain solutions that includes design engineering, project management, manufacturing, quality, logistics/trade compliance, and inventory management. Their ISO 9002, ISO 13485, and ISO/TS-16949 certified facilities underscore their commitment to precision, speed, and quality. With an enhanced local inventory and a robust international presence, they are well-equipped to meet the evolving needs of their clients. As a unified brand, GPSS will provide their expanded capabilities and solutions to meet their customers' needs. For questions or further information, please fill out a contact form or a request to quote on Globalpointusa.com and their team will reach out to you promptly. You may also contact their Director of Sales, Ted Gruhn, at tgruhn@globalpoint sourcing.com for any assistance that you may need.

September 24 Newsletter

New From TRU-Vu!

55" 4K Touchscreen Monitors

Discover the future of industrial technology with our new 4:3 and 16:9 industrial touch screen monitor solutions, designed to elevate operational efficiency. Engineered for durability and precision, these touchscreens deliver crystal-clear resolution and responsive touch capabilities, ensuring seamless interaction even in the most demanding environments!

Introducing our latest innovation in display technology: our new ZBTP-55G-24 55" 4K Industrial-Grade Touchscreen Monitor.

Engineered for superior performance and durability, this state-of-the-art monitor boasts crystal-clear 4K resolution, delivering stunningly sharp visuals that bring every detail to life. Its industrial-grade construction ensures reliability in even the most demanding environments, while the advanced touchscreen interface offers seamless interactivity for an enhanced user experience. Perfect for high-traffic areas, control rooms, and industrial manufacturing environments. This monitor combines cutting-edge technology with rugged robustness to meet the needs of modern industries. Elevate your visual capabilities and operational efficiency with our top-tier 55" touchscreen monitor—where precision meets resilience.

Now in Stock and Ready to Ship!

[Learn more HERE](#)

21.5" IP65 OUTDOOR-RATED WATERPROOF MONITORS

Our SRMW-21.5Z 21.5" Sunlight Readable Waterproof LCD Monitor boasts unparalleled visibility with its high-brightness, anti-glare screen that ensures crystal-clear readability even under direct sunlight. Its sleek all-glass front surface and rugged, stainless steel waterproof design guarantees reliable operation in any weather condition, making it perfect for outdoor digital signage, industrial applications (including indoor wash-down facilities), or public information displays. Built to withstand the elements and deliver vibrant, sharp visuals, this monitor is your go-to solution for durability and performance in any outdoor setting.

In Stock and Ready to Ship!

[Learn more HERE](#)

17.3" SUNLIGHT READABLE Monitors

Experience unmatched visibility and precision with our cutting-edge display technology with our SRM-17.3G-36 17.3" Sunlight Readable Industrial Grade Monitor, designed for unmatched performance in the toughest conditions. This high-brightness display ensures crystal-clear readability even in direct sunlight, making it ideal for outdoor and high-ambient light environments. With a versatile 9-36VDC input, it seamlessly integrates into various power setups, while the built-in ambient light sensor optimizes screen visibility based on surrounding light conditions. Encased in rugged steel housing, this monitor offers superior resistance to shock and vibration, ensuring reliability and durability in demanding industrial settings. Trust our 17.3" monitor to deliver exceptional clarity and resilience, no matter the challenge. The SRM-17.3G-36 is in stock and ready to ship!
Learn more [HERE](#)

13.3" SUNLIGHT READABLE TOUCHSCREEN MONITORS

Discover unparalleled durability and performance with our SRMHTP-13.3GDA 13.3" rugged touchscreen monitor, engineered for extreme environments and bright conditions. Boasting a stunning 1,500 nits of brightness, this display ensures crystal-clear visibility even in direct sunlight. Its projected capacitive touchscreen provides smooth, responsive interaction, while the fan-less design ensures silent operation and enhanced reliability. With maximum resistance to shock and vibration, this monitor is built to withstand the harshest conditions. Powered by a versatile 9-36VDC input, it offers flexible integration for a range of applications. Enhance your rugged computing experience with our high-performance touchscreen monitor, designed to meet the demands of the most challenging environments.
For more information, click [HERE](#)

August 24 Newsletter

New From TRU-Vu!

4:3 & 16:9 Industrial Touchscreens

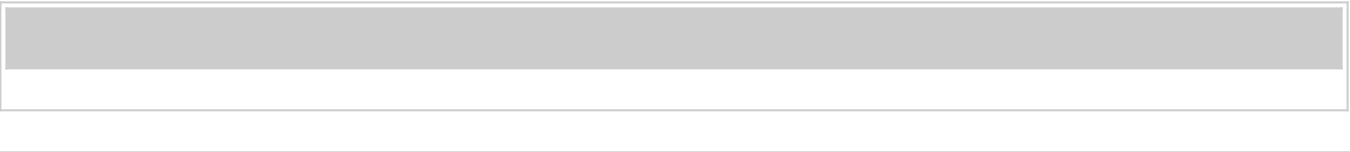
Discover the future of industrial technology with our new 4:3 and 16:9 industrial touch screen monitor solutions, designed to elevate operational efficiency. Engineered for durability and precision, these touchscreens deliver crystal-clear resolution and responsive touch capabilities, ensuring seamless interaction even in the most demanding environments!

In a world where widescreen displays have become the norm, the 4:3 monitor remains a staple in various professional fields. We're thrilled to unveil our latest innovation: the VL-ZBTP-17C, designed to seamlessly blend classic proportions with cutting-edge Projected Capacitive Touchscreen technology.

This new 17" 4:3 Touchscreen Monitor features a rugged steel enclosure with rear VESA holes; edge-to-edge protective glass; analog and digital video inputs; and our unique TRU-Tuff Treatment for maximum resistance to shock and vibration. The PCap touchscreen is HID compliant (aka plug-and-play), and does not require calibration or any drivers for computers running any version of Windows OS.

The VL-ZBTP-17C is in stock and ready to ship!

For more information, click [HERE](#)



Introducing our new VL-ZBTP-21.5C 21.5" Industrial Touchscreen Monitor, a powerhouse of precision and durability engineered to elevate your operational efficiency. With its sleek, rugged design and high-resolution display, this monitor is built with a steel enclosure to withstand the toughest environments while delivering crystal-clear visuals and intuitive Projected Capacitive touch functionality. Perfect for demanding industrial applications, it features advanced touch sensitivity, anti-glare coating, and robust connectivity options to integrate seamlessly with your existing systems.

The VL-ZBTP-21.5C is in stock and ready to ship!
For more information, click [HERE](#)



TRU-Vu 43" 2,000 nit Touchscreens BACK IN STOCK!

With an astonishing brightness of 2,000 nits, the VL-SRMHTP-43A-OF 43" Sunlight Readable Touchscreen monitor delivers exceptional clarity even under direct sunlight, ensuring that your content remains visible and vibrant no matter the weather conditions. Engineered for the great outdoors, its rugged, weather-resistant front surface stands up to the harshest elements, while its advanced touchscreen technology provides seamless interaction with superior responsiveness. Whether used for digital signage, interactive kiosks, or high-visibility control panels, our 43" Outdoor Touchscreen Monitor offers unparalleled durability and performance, transforming outdoor spaces into dynamic, engaging experiences. For more information, click [HERE](#)



Did you know over 95% of TRU-Vu Monitors are TAA Compliant?

The Trade Agreements Act (TAA) of 1979 requires the U.S. government to only buy products that are made in the U.S. or in designated countries. A product is considered TAA compliant if it's manufactured or "substantially transformed" in the U.S. or in a designated country. Substantial transformation can be demonstrated by showing that at least 50% of production took place in a TAA-approved country, or that the changes made were essential to the product's purpose. The country of origin for a TAA compliant product is determined by the last substantial transformation it undergoes before being exported to the U.S.

If you are working with a Government agency, chances are they will require TAA compliant products. The majority of LCD monitors do not meet TAA requirements as they are mostly manufactured in mainland China. Fortunately, over 95% of TRU-Vu monitors are manufactured in a TAA compliant country.

The next time you're in need of a TAA compliant LCD monitor or touchscreen solution, be sure to give us a call!

For a complete list of TRU-Vu TAA Compliant monitors, click [HERE](#)

July 24 Newsletter

New From TRU-Vu!

10.1" & 18.5" Sunlight Readable Outdoor Touchscreens

Don't let summer slip away without embracing the power of TRU-Vu's Sunlight Readable Outdoor Touchscreens. Whether you're enhancing customer engagement, upgrading your venue's appeal, or simply enjoying the sunshine with cutting-edge technology, our Weatherproof Touchscreens are your gateway to a successful summer season.

Our brand new SRMXTPW-18.5R-36 18.5" High Bright Touchscreen monitors feature 1,000 nits of brightness, PCap Touchscreen technology, an IP65 & NEMA 4X completely-sealed stainless steel weatherproof enclosure, and an extreme operating temperature range of -4°F to 158°F (-20°C to 70°C).

For more information, click [HERE](#)

The SRMTPWP-10.1R36 are all-new 10.1" sunlight readable panel mounted weatherproof PCAP touchscreen monitors. They feature 1,200 nits screen brightness specifically for use in direct sunlight. We design these monitors to operate in nearly any environmental conditions. They are capable of performing in temperatures from -22° to +176°F. The rugged stainless steel enclosures are waterproof for panel mount or flush mount applications.

For more information, click [HERE](#)

Both models are in stock, and are ideal for outdoor kiosk, ticketing, vending, wayfinding, loadouts, and digital signage applications.

TRU-Vu 32" Portrait Water-Resistant Touchscreen Monitors
Designed and built with a high bright & high temp LCD panel, along with a rugged weatherproof stainless steel enclosure, the SRMHWTP-32R-P 32" water-resistant outdoor-rated touchscreen monitors can be used in virtually any outdoor or indoor environment.

Key Features Include:

- 1,500 nits of Brightness
- Automated Ambient Light Sensor
- NEMA 4X/IP65 Stainless Steel Enclosure
- PCap Touch Technology
- 4°F to 140°F Operating Temperature Range
- Auto Restart After Power Loss
- SHIPPING NOW!
- Learn More [HERE](#)

HMI TOUCH PANEL DISPLAYS

HMI
s
are
no
lon
ger
con
fine
d to
the
enc
losu
re
doo
r!
Wit
h
the
C-
mor
e
EA9
-
RHM
|



headless HMI from Automation Direct, you can display your factory floor data how and where you choose. Their HDMI-enabled device works with televisions, monitors, projectors, and most any other HDMI display device of any size to display real-time operational data or messages. However, only a select few touchscreen monitors are compatible. Fortunately, TRU-Vu has a wide variety of touchscreens ranging in size from 8" to 21.5" that have been confirmed compatible HMI touch panel displays, without needing to upload new drivers (which the EA9-RHMI does not allow for). Our HMI touch screen compatible options include both Panel Mount models as well as VESA Mount (aka tabletop) touchscreens.

INDUSTRIAL MONITORS DESIGNED FOR DEMANDING APPLICATIONS

TRU-Vu industrial LCD monitors and industrial touch screen solutions are designed and built with industrial-grade components. Our rugged LCD displays deliver the highest level of quality and reliable performance both indoors and out. TRU-Vu Monitors provides rugged displays for the most challenging environments. We are based out of Chicago with over 30 years experience in the video industry. All of our monitors are TAA Compliant as well as NDAA Compliant. Learn more Reasons to Choose TRU-Vu!

TRU-VU MODEL (HMI TOUCH SCREEN)

Touchscreens FOR EA9-RHMI AUTOMATION DIRECT

Sometimes life gets messy....or too wet, bright, or dirty for a standard touch screen



RUGGED OUTDOOR 12" TOUCH SCREENS

TRU-Vu Monitors is a leading provider of industrial-grade monitors and touch screens. We recently introduced a rugged outdoor panel-mount super bright touchscreen ideal for use in truck scale terminals, automated ticketing and load out systems and are deployed in the inspection, marine, oil and gas sectors, Industrial and transportation industries. For instance, It has a super bright touchscreen panel with 1,500 nits for crystal clear images even in direct bright sunlight. This 12" Weatherproof touch monitor features a rugged water resistant stainless steel panel mount enclosure. Flush mount this unit into any panel, cabinet, door or wall. Additionally, It is impervious to liquids, rust and corrosion. It is rated NEMA 4X. This weatherproof 12" monitor will easily withstand the elements outdoors. It is also ideal for wash down environments. For this reason, it is widely used in industrial and food processing plants. The touch screen features 5-wire resistive touch technology.

Learn more about the SRMHXTRWP-12R-36 is a rugged industrial grade 12" sunlight readable, water resistant touch screen. All of the specifications are in the model link.

- **Super-high visibility.**

With 1,500 nits brightness, this model is 5X brighter than standard screens. It is ideal for use in direct sunlight. A automated ambient light sensor dims and brightens the panel based upon ambient light conditions.

- **Suitable for any environment.**

The corrosion-resistant, waterproof stainless steel enclosure withstands rain sleet and snow. It will operate in temperatures from -22° to +185°F

- **Rugged and reliable.**

Industrial-grade design, 24/7/365 operation, exclusive

- **TRU-TUFF treatment**

for shock and vibration, and our full 3-year warranty ensure long-term reliable performance

- **Simple installation and compatibility.**

Unique panel-mount design ensures quick installation. Analog and digital video inputs, and 9-36 VDC.

- **Available in sizes from 8" to 23.8"**

About the Company:

TRU-Vu Monitors offers over 200 models of industrial-grade LCD monitors and touch screens. For instance, this includes Sunlight Readable, Medical-Grade, Zero-Bezel, Panel-mount and more. All monitors can also be modified or customized to meet your exact requirements. Furthermore, they are backed by a full 3-year warranty.

OVER 200 RUGGED LCD MONITORS

TRU-Vu Monitors offers over 200 industrial rugged TAA-Compliant monitors and industrial touch screen displays. Therefore, selecting the ideal monitor or touchscreen solution may sometimes be a bit overwhelming. Use our **Advanced Search Tool** to help narrow down your choices. Just enter your project specifications. Additionally, the Search Tool will filter the choices to show only those computer monitor models that meet your criteria. Or just give us a call! Learn more **About Us**, or view our **full site map**. View all of our informative **VIDEOS** on our tech center page.