



**Customizable
Industrial-Grade
LCD Monitors &
Touch Screens**

Who is *TRU-Vu*?

- **Leading supplier of high-quality, customizable, industrial-grade LCD monitors**
- **Specialize in custom and OEM designs, even in low volumes**
- ***TRU-Vu* monitors are designed, stocked and serviced in Illinois**

Standard Products



Industrial-Grade Monitors



Touch Screen Monitors



Medical-Grade Monitors



Sunlight-Readable Monitors

Standard Products



Panel Mount Monitors



Waterproof Monitors



4:3 Aspect Ratio Monitors



Zero-Bezel Monitors

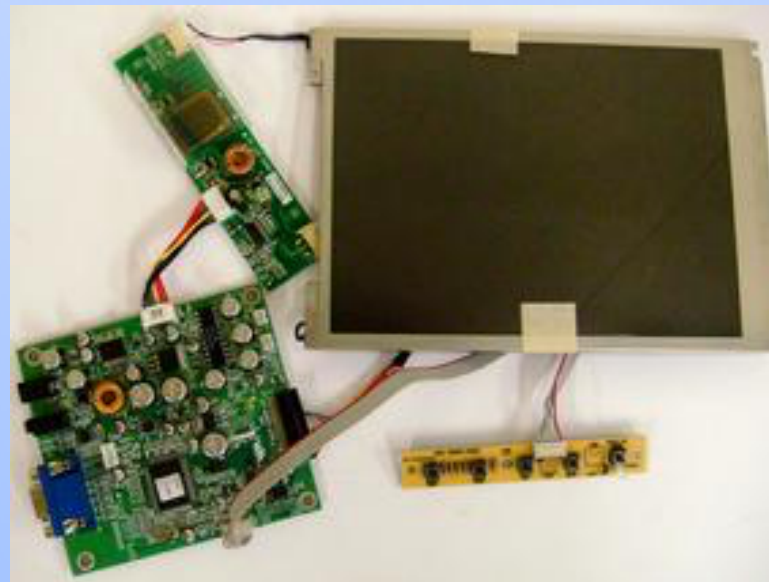
Customized Solutions



Open-Frame



Private-Label



Custom OEM Design

Customized Solutions

We can modify, or completely custom-build monitors with any of the following options:

ENCLOSURES

HOUSING: ABS, Steel or Stainless Steel

OPEN FRAME: No housing; ideal for machine builders

WATERPROOF ENCLOSURES: NEMA 4X and IP-rated enclosures

PANEL MOUNT: indoor and outdoor configurations

COLORS: Custom colors for OEM's

FACE TREATMENTS

PROTECTIVE GLASS: Glass in front of the LCD screen for protection; Anti-Reflective coating available

TOUCH SCREEN: Resistive, Capacitive, Projected Capacitive (multi-touch) , SAW and IR

OPTICAL BONDING: Optical grade resin injected between LCD screen and outer glass for superior image quality and enhanced durability

SUNLIGHT READABLE/ HIGH-BRIGHT: Enhanced backlighting to achieve 1,000 - 2,200 nits of brightness

Customized Solutions

VIDEO

VIDEO INPUTS: VGA, HDMI, DisplayPort, S-Video, HD-SDI, DVI, Analog, BNC Loop-Thru, NTSC/PAL

ELECTRICAL

CUSTOM TIMING: Custom signal programming available to meet proprietary and legacy video signal requirements.

SPECIAL VOLTAGES: 12V-36VDC, 90-240VAC and universal AC/DC voltage models

OTHER POPULAR OPTIONS:

SPEAKERS: Single or dual internal speakers

PRIVATE-LABEL: Your company (or your customer's company) name or logo silk-screened onto the front bezel, and unique model number on the rear label

TRU-Vu Industrial Monitors

VS

Retail/Consumer-Grade Monitors

Built for harsh industrial and commercial environments

Use industrial-grade components for long-term reliability

Use the highest-quality LCD panel to ensure optimal image quality

Available in 12-36VDC, 90-240VAC, and Dual Voltage

Excellent viewing angle (to 178°)

Guaranteed long-term availability for OEM models

Built for clean, desktop operation; commercial use voids warranty

Utilize low-cost components for low-cost mass production

Use low-to-mid-level panels to lower their cost-of-goods

Available in 120VAC

Narrow viewing angles

Models change often, on average every 6 months

TRU-Vu Industrial Monitors

VS

Retail/Consumer-Grade Monitors

3-Year Warranty, with Advance Replacement (std. models)

3 to 12 month warranty

Available in a wide range of configurations: standard, touch screen, open frame, panel mount, etc.

Standard configuration only

Customizable to meet your exact requirements

Not available

Demo units available for testing and evaluation

Not available

Product design, tech support, and troubleshooting from U.S. technicians with 15+ years experience

Replies from non-technical salesperson or overseas call-centers with minimal product training or experience

Top 10 Reasons to Choose *TRU-Vu*

1. *TRU-Vu* monitors are designed and built with industrial-grade components for demanding industrial/commercial applications

2. We utilize grade-A LCD panels, high-end image processing boards and superior graphics engines to ensure bright, sharp images and vivid colors

3. Designed for 24/7/365 operation

4. Huge selection of display styles and sizes:

- 5'' - 65'' Screen Sizes
- Rugged, Industrial-Grade
- Optically Bonded
- Sunlight Readable
- 4:3 & 16:9 Aspect Ratios
- Medical/Surgical Grade
- Touch Screen
- NEMA 4X Waterproof
- Mobile/Portable
- Panel-Mount, Open Frame, etc.
- 12-36 VDC or 90-240 VAC

Top 10 Reasons to Choose *TRU-Vu*

- 5. Monitors can be customized/modified with features/functions to meet your specific needs**
- 6. Guaranteed long-term availability for OEM models (3 Yrs+)**
- 7. Private-label with your company name, logo, model number and colors on the monitor and/or labels**
- 8. Demo units available for test/evaluation**
- 9. 3-Year warranty (8.4" and larger), with OEM Advance Replacement Program**
- 10. Product design, development, inventory and tech support in the USA**